

International
Course Guide
2023



Fed

Federation University Australia acknowledges the Traditional Custodians of the lands and the waters where our campuses, centres and field stations are located, and we pay our respects to Elders past and present. We extend this respect to all Aboriginal and Torres Strait Islander and First Nations Peoples.

The Aboriginal Traditional Custodians of the lands and waters where our campuses, centres and field stations are located include:

Wimmera	Wotjobaluk, Jaadwa, Jadawadjali, Wergaia, Jupagulk
Ballarat	Wadawurrung
Berwick	Boon Wurrung and Wurundjeri
Gippsland	Gunaikurnai
Nanya Station	Mutthi Mutthi and Barkindji
Brisbane	Turrbal and Jagera



Welcome	01	Business	30
Where you belong	02	Education and Early Childhood	34
Regional and city living	04	Engineering	39
Our campuses, your way	06	Health	44
Your home at Fed	10	Humanities, Social Sciences and Criminology	48
Our support services and programs	12	Information Technology	52
International Student Advisory	14	Performing Arts, Visual Arts and Design	58
Experience uni life	15	Psychology	60
Scholarships & grants	16	Science	62
Work Integrated Learning	18	Sport, Health, Physical and Outdoor Education	64
Industry connections (partnerships)	19	Higher Degrees by Research	66
Study abroad and exchange	20	Your next steps	70
Alumni & benefits	22	Academic entry requirements	72
English and Academic Preparation	24	English language requirements	76
Pathway courses	25	Important information (living costs)	78
Course summary 2023	26	Key dates for 2023	80

At Federation University, we aim to make a real difference to the lives of every student who walks through our doors, to the communities we help build and are proud to be a part of.

We are one of Australia's oldest universities, known today for our modern approach to teaching and learning. For 150 years we have been reaching out to new communities, steadily building a generation of independent thinkers united in the knowledge that they are greater together.

Be part of our diverse community

Today, we are proud to have more than 18,500 Australian and international students and 118,000 alumni across Australia and the world. We welcome people from all backgrounds and cultures into our supportive, inclusive and thriving community.

Ready for the next level?

The transition to university is exciting - for you and for us. In the following pages, we'll guide you through every step of the way – the ins and outs of making an application, what campus life is like, our outstanding facilities, the scholarships we offer, and so much more.

Where you belong

Wherever you choose to study at Federation University, you will feel part of the community with our regional and city options.

Through our contacts with industry connections and partnerships ranging from IBM within our Technology Park in Ballarat through to River City Labs in Brisbane, the future is in your hands. We pride ourselves on leading innovation in evaluation and research to make an impact on the world around us.

All our campuses are unique in their offering, providing you with the option to choose the life you want to live in Australia. Our campuses are welcoming, safe, supportive and the ideal place to call home.

Either onsite or close by, all our campuses have everything you need to get ahead in your studies and enjoy life outside the classroom. Consistently voted as one of the safest countries in the world*, Australia is a beautiful, multicultural country with world-renowned natural attractions, quality of life and climate. From the Great Ocean Road to the Great Barrier Reef, many of Australia's highlights are within close reach of our campuses.

* Global Peace Index, 2020

#1	in Australia for employment outcomes FOR SIX YEARS¹
#1	in Victoria, Australia for STUDENT SUPPORT²
#1	in Victoria, Australia for SOCIAL EQUITY¹
TOP 250	young universities IN THE WORLD²
5/5 RATING	EXCELLENCE IN RESEARCH³ Well above the world standard in: Applied Mathematics, Environmental Science and Management, Civil Engineering, Clinical Sciences, Human Movement and Sports Science, and Nursing.

1 The Good Universities Guide 2022
2 Times Higher Education (THE) World University Rankings 2022
3 Excellence in Research Australia, 2018 National Report

4
CITIES

6
CAMPUSES

50+
CONNECTED
INDUSTRIES
& PARTNERS

AUSTRALIA

Queensland

New South Wales

Victoria

Brisbane

Queensland

Located in the heart of Queensland's vibrant and multicultural capital city, our award winning Campus provides access to industry linked courses, personalised learning and support services, whilst being next door to the fantastic city transport, eateries, shopping and entertainment options.

Ballarat

Regional Victoria

With over 150 years of history within the central goldfields of Ballarat, international students can study at two campuses across the city of Ballarat.

Mt Helen

Surrounded by a natural environment, our flagship Campus with most of our courses on offer. Mt Helen welcomes you with sporting facilities, a café and eating areas, spiritual facilities and more.

Camp Street

Located within the Ballarat Central Business District (CBD), is our Arts Academy with specialised theatres and galleries.

Melbourne | Berwick

Victoria

Our newest campus equipped with the newest science and nursing labs, on-campus accommodation and excellent rail and road links, Berwick provides an excellent experience for those wanting to enjoy Melbourne.

Gippsland

Regional Victoria

Set on 60 acres of sprawling, natural environment in the heart of the Gippsland region and home to the Carbon Technology Research Centre, our Gippsland Campus located in Churchill welcomes you to study with a variety of courses offered.

Regional and city living

Federation's campuses located in regional and city locations provide several options for you to choose from. If you're unsure of whether the hustle and bustle of city life or a more relaxed pace surrounded by nature is best for you, here's an overview of what you can expect in each location to help you decide.

Regional living

More and more international students are choosing to study at our campuses in regional Victoria.

Ballarat is home to our Mt Helen and Camp Street campuses and is known for its elegance and history. Famous since the 1850s, when the Victorian gold rush drew immigrants from all over the world, Ballarat is Victoria's largest and Australia's third-largest inland city, with a population of over 115,000 people.

The city itself has many attractions, including Victorian era architecture, a bustling city centre and the tranquil charm of Lake Wendouree, the famous Sovereign Hill outdoor museum and the Ballarat Botanical Gardens. Living in Ballarat offers an affordable and relaxed regional city lifestyle, with a vibrant nightlife, restaurant and cultural scene, popular local festivals and easy access to spectacular sights.

Gippsland is an extensive and diverse region of Victoria renowned for its natural beauty. The local scenery ranges from spectacular coastline to snow covered mountains. Churchill, home to our Gippsland Campus, is one of four major towns in the Latrobe Valley that has a total population of over 70,000 people. Known for its wide range of industries, the Valley's key sectors include education, health, tourism, retail, manufacturing, power production, agribusiness and forestry. The Campus features modern architecture and is set on 60 hectares of stunning landscaped grounds.

Regional Benefits

The Latrobe Valley boasts all the recreational and cultural facilities of a large regional centre. The region is within easy driving reach of the Mt Baw Baw Ski Resort, white-water rivers and beautiful coastal parks, including Wilsons Promontory and the Gippsland Lakes.

Students based in regional locations find their learning experiences are enriched by meeting local and international people in a supportive environment where you're never too far from your friends. You'll have an authentic Australian experience with more opportunities to improve your English and understand Australian culture and history. You'll enjoy a quality lifestyle and won't have a long commute to campus either.

Living in Ballarat or Gippsland will save you money as accommodation costs are lower than larger cities. You'll also build meaningful connections with industry through part-time work with major regional employers. Living in a regional area also provides the opportunity to benefit from an attractive range of government incentives.* This includes the ability to apply for a post-study work visa for up to five years.

*For further details visit Australian Government Department of Home Affairs website, immi.homeaffairs.gov.au/visas
International students should refer to immigration to confirm eligibility requirements. These are subject to change.

City living

You'll be spoiled for choice and rarely bored in a major city.

Brisbane is the capital city of Queensland and is the perfect place to live, study and work. With a beautiful subtropical climate, Brisbane enjoys year-round outdoor activities and events.

Built along the banks of the Brisbane River, the city has a vibrant centre including shopping, arts and entertainment, surrounded by beautiful parkland. Living and studying in the city allows you to balance inner city life with access to natural outdoor spaces.

Brisbane is Australia's fastest-growing capital city for employment, ahead of Sydney, Melbourne and Perth.

Brisbane is easily connected to other popular destinations such as Sydney, Melbourne, Byron Bay and the Gold Coast with many flights and buses coming and going each day. It's also easy to get around on public transport via an excellent network of trains, trams, buses or ferries.

Industry networking opportunities abound with an abundance of global businesses providing employment opportunities for students and graduates.

Berwick is an attractive and multicultural suburb of Melbourne, routinely ranked in the top ten most liveable and best student cities globally⁺. One of the fastest growing regions in Australia, Berwick has a diverse population, including residents from over 150 different cultural backgrounds.

Within easy reach of Melbourne's vibrant culture and entertainment, Berwick is also a short journey to the more tranquil charms of national parks and the Mornington Peninsula. Leafy boulevards, parklands, cafes, restaurants and boutique shops abound in the area. The Wilson Botanic Park offers lakes, picnic areas and scenic walking trails, while Westfield Fountain Gate, Australia's second largest shopping centre, is just one stop away on the train.

The suburb's key employment sectors include education and health, with a range of quality education facilities, public and private hospitals and other medical facilities servicing the growing region.

⁺ QS World University Ranking 2023 Report

[^] EIU Global Liveability Index 2022



Lose yourself in Ballarat

Explore Ballarat's historic CBD with colonial architecture and shop at Ballarat's many boutiques. Or, join the Park Run held in Victoria Park held every Saturday – there is just so much to do in Ballarat.

With Ballarat's growing population, there are more restaurants and cafes than ever before. Visit Armstrong Street North for exciting international food and cheap eats, or head to Lake Wendouree for a meal and watch the sunset.



Our campuses, your way

Ballarat

Choose regional Victoria

Ballarat is the historic home of Federation University Australia, with our timeline dating back to the foundation of the School of Mines Ballarat in 1870. Since changing its name to Federation University Australia in 2014, it continues to be a central focus of the city, with major campuses and strong connections to local industry, culture and community.

Mt Helen Campus

Where nature meets innovation

Our flagship Ballarat campus is set on 110 hectares of beautiful natural bushland. Mt Helen combines a beautiful location with cutting-edge teaching and research facilities. The Mt Helen Campus boasts a state-of-the-art science and engineering building, immersive nursing labs, a health and sports centre with 25-metre pool, lecture theatres, 24-hour access computer labs, library, spiritual facilities, student lounges, café, eating areas and a children's centre. With beautiful walking trails around the grounds, keep an eye out for koalas and kangaroos.

Camp Street Campus

Creativity in the heart of the city

Located within the historic heart of Ballarat, Camp Street is known for its highly-regarded Arts Academy – a unique integration of new and historic buildings including the Old Courthouse and General Post Office Building plus specialised theatres and galleries. You can study visual and performing arts courses in the kind of environment needed to hone your creativity, experiment and showcase your work.

Transport

About 110km north-west of Melbourne – accessible train and bus services operate between Melbourne's Southern Cross Station and Ballarat Station. A one-way journey is approximately 1 hour duration. To connect to the Mt Helen Campus, a bus service operates from Ballarat Station at half hourly intervals. Travel time is 25 minutes from Ballarat Station. There is also an excellent freeway network that connects Melbourne and Ballarat if you prefer to travel by car. This journey is 1.5 hours duration.

Gippsland

Globally inspired

Our Gippsland Campus combines the best of what regional campus life is all about – a welcoming community, an innovative learning environment and excellent research facilities. Situated on 60 hectares of landscaped grounds and adjacent to the town of Churchill, it's approximately two hours from Melbourne.

Harnessing the potential of technology

At the Gippsland Campus, we offer our students the very best learning and research facilities – particularly in the Carbon Technology Research Centre (CTRC). Gippsland also features science, engineering, nursing and midwifery labs with the latest equipment, a 1500m2 multi-use auditorium, and a three-level library with quality study spaces for group work, such as the Library Learning Centre.

Transport

The Gippsland Campus is located 160km from the city centre of Melbourne. Train and bus services operate between Melbourne's Southern Cross Station and Morwell Stations.

Go your own way in Gippsland

Located within easy driving distance, you can have a unique experience by visiting Victoria's Mt. Baw Baw alpine resort, or head to Tarra Bulga National Park – a spectacular temperate rainforest.

With so many towns and small cities within the Gippsland region, it's hard to stop at just one. In your down time, head to one of the many towns such as Warragul, Traralgon and Sale where more than 270,000 people call home, or explore further afield areas of Bairnsdale and Wilson's Promontory.



Live like a local in Melbourne

Your time in Australia's sporting capital wouldn't be complete without an Australian Football League (AFL) match at the 'G! Or, enjoy Melbourne's premiere tennis tournament, the Australian Open in January.

Visit Fitzroy for some excellent vegetarian food options before heading to Lygon Street for dessert. Go shopping at DFO for big brands and bargain basement prices.

Brisbane

A high degree of success

Accelerate your career with a degree from our Brisbane Campus. Students benefit from small classes from knowledgeable academics, offering a premium learning experience. Take advantage of our employability, skill and jobs hub to enhance your prospects of securing high earning employment during your studies and post-graduation whilst enjoying a large selection of eateries, shopping and entertainment all on our doorstep.

Refer to Industry connections on page 19 to read more about our partnerships with River City Labs.

Transport

The Brisbane Campus is located in the heart of Brisbane City at 333 Ann Street. It is only a one block walk from Central Station and a short walk from the CityGlider bus service and ferry terminals.

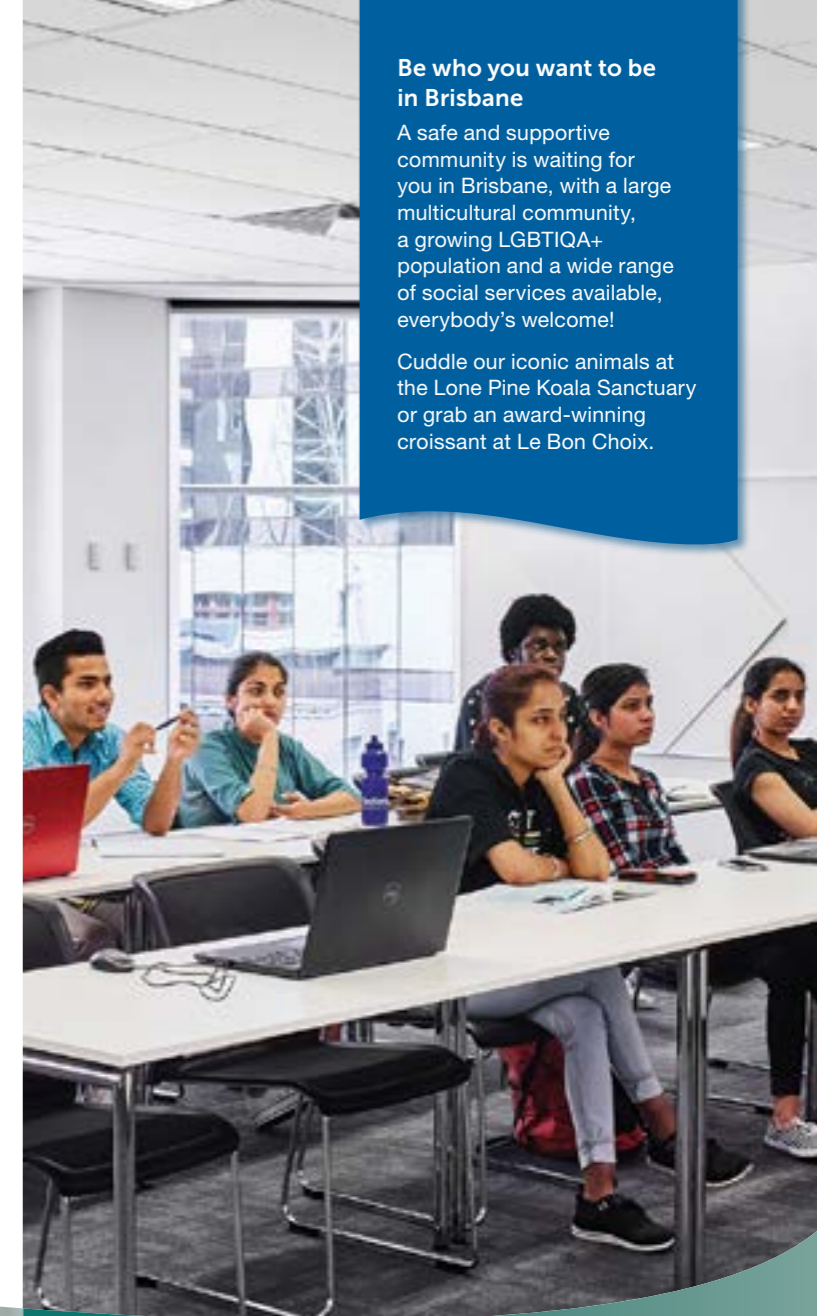
Go for gold with Fed Degree-Plus

Exclusive to the Brisbane Campus, students are able to undertake Fed Degree-Plus programs **(valued up to \$2,000 AUD)**. Once on campus, students will work with on campus staff to access a range of micro-credentials, short courses and certificates in addition to their degree at no additional cost.

Be who you want to be in Brisbane

A safe and supportive community is waiting for you in Brisbane, with a large multicultural community, a growing LGBTIQA+ population and a wide range of social services available, everybody's welcome!

Cuddle our iconic animals at the Lone Pine Koala Sanctuary or grab an award-winning croissant at Le Bon Choix.



Berwick

Study in suburban Melbourne

The Berwick Campus is located around 40km southeast of the Melbourne CBD, is easily accessible by metro train. Berwick's multi-level campus combines modern architecturally designed buildings and innovative facilities with spacious landscaped surroundings – everything you need to make the most of your time here.

Building a brighter future

Equipped with a newly developed science lab, nursing labs, library and on-campus accommodation, Berwick is our newest campus – and it shows. It also features an expansive solar array that dramatically reduces our carbon footprint, and both metro and country rail links are within walking distance.

Transport

The Berwick Campus is located 40km southeast of the city centre of Melbourne. Train and bus services operate between Melbourne's City Loop Stations and Berwick Station via the Pakenham line metro train. Travel time is approximately 1 hour duration. Upon arrival at Berwick Station, it is a 5 minute walk to reach the Berwick Campus. You can also travel by car. This journey takes 45 minutes via the M1 Highway (this route has tolls), or 1 hour via the M3 and M1 highways (no tolls).



Online Study

International students located in their home countries outside Australia can study online. Studying via our online studies hub is both interactive and engaging. You'll not only have access to your lectures, tutorials and class materials, but you'll be able to chat with academics and classmates in real time, as well as join support sessions and fun virtual events too.



Benefits of living on campus

Success

Our research shows students who live with us are more likely to succeed

Friendship

Develop instant networks and lifelong friendships with a sense of community

Opportunity

Amazing opportunities, planned experiences, activities and so much fun

Support

24/7 support so you can enjoy a balanced living and learning community

Convenience

For peace of mind and convenience, residences are located on or close to campus

Your home at Fed

Make our home, yours

At Federation University we offer a range of accommodation options located on or close to our campuses in Ballarat, Gippsland and Berwick.

Living in residential accommodation, you will get to meet people from a range of backgrounds, cultures and courses in a community as thriving as it is inclusive.

Our research shows students who live in university residences are more likely to be successful in their studies and transition to university life. Our highly effective support programs, and unique residential experience contribute to greater satisfaction and success in relation to your university experience. Our dedicated teams are there to provide support and make your success and happiness a priority. There is also on-site security available to you, day and night.

Our accommodation starts from around \$180 per week; with a range of options including fully furnished single bedrooms, self-contained apartments, ensuite rooms, studios and houses, both on and off campus. You will have access to communal living areas, TV/lounge rooms, fully equipped kitchens, laundry and recreation facilities.

Accommodation fees include all bills, internet, 24/7 access to residential support, various residential programs, events and activities.

Accommodation Support Scholarship

International students commencing studies with Federation University Australia may be eligible for an Accommodation Support Scholarship to live on campus in Ballarat, Berwick or Gippsland. Valued at up to \$4000 a year.

Short-term accommodation

Short stay accommodation is available for students at the Ballarat, Berwick and Gippsland campuses. Visit the website for full details and bookings.

International guarantee

As an international student, you're guaranteed* accommodation while studying at Federation University.

Brisbane campus

A variety of accommodation options are available for students. Visit the Brisbane student accommodation portal to see the comprehensive guide to purpose-built student accommodation available to students in Brisbane. Visit brisbanestudentaccommodation.com Visit our website for details on accommodation options, and to apply online federation.edu.au/fedliving

* Eligibility and application criteria apply



Our support services and programs

The help you need, when you need it

At Federation University, we are ranked the number one university in Victoria for student support.* We understand that studying abroad is exciting, but it's also a difficult challenge, and you're probably going to need some help. You might need help understanding your assignments. You might need support with your English; or you might need somebody to talk to about more personal life concerns.

Our effective range of student-focused services enables international students to develop the skills, knowledge and confidence needed to succeed in Australian education. Studying abroad is a challenge, but with the right support and guidance, there's always a way to succeed.



English Language Support Service

Our English Language Support Service offers free assistance to help new international students understand course materials, assignments and university culture. Experienced and empathetic tutors explain what's required of you as a student in Australia and give you the skills and confidence you need to communicate and study in an Australian university.

Libraries

Comfortable spaces to study, with over 500,000 books and e-books and more than 30,000 journal titles. You can also borrow a laptop or get involved in our library skills programs.

federation.edu.au/library

Counselling

Onshore students are welcome at our free and confidential counselling service. Our professional counsellors provide support and referral for all personal and academic issues. If you can't make it in, we also offer video and phone counselling. If you're located outside Australia, you can contact the International Student Advisory team for assistance.

federation.edu.au/counselling

Spiritual facilities

People of all faiths are welcome at Federation University. There are multi-faith prayer rooms/places of peace for all students at our campuses, as well as Muslim prayer rooms with separate male and female facilities. Chat with a chaplain for spiritual and pastoral care support, or any practical matters to do with university life.

federation.edu.au/chaplaincy

Support for students with disabilities

We want everyone to have full access to all our programs and facilities. If you have a disability, short or long term medical condition, or a mental health condition, or care for someone that does, just get in touch with our Disability and Learning Access Unit.

federation.edu.au/disability

Online services

Our #1 rated student support services* extends virtually - we're only ever a click away. Our International Student Advisory team are on hand to guide you through your study journey. We also offer virtual drop-in sessions with learning advisors and mentors, as well as fun virtual events and career guidance too.

Student careers and employment

The Careers and Employability team offer a range of events, programs and services enabling you to find work while you study, gain valuable work experience, plan for your future career and enhance your employment prospects.

federation.edu.au/studentcareers

Elite athlete, coach and performer university program

It can be difficult to juggle higher education with your sporting and performance goals, but our service lets you make flexible study arrangements so you can excel in both arenas.

Childcare centres

Federation's Children's Centres are located at our Mt Helen, SMB and Gippsland campuses, and there are a number of external childcare centres located within a short distance of the Berwick and Brisbane campuses.

federation.edu.au/childrens-centres

Student health

Ballarat

The Mt Helen Campus is home to an accredited Health Centre, staffed by doctors and nurses throughout study periods. The centre provides confidential consultation services to the University community.

federation.edu.au/health-centre

Our SMB and Camp Street campuses are located within easy reach of a full range of health services in the Ballarat CBD.

Berwick

Berwick Healthcare is co-located on campus. Students and staff can access all available services.

Gippsland

A campus nurse provides free, confidential consultations for all students.

Brisbane

Students enrolled into our Brisbane Campus can access health services through the Brisbane CBD 7 day Medical Centre, located close to campus with a range of services available.

* The Good Universities Guide 2022

International Student Advisory

Our International Student Advisory team are committed to providing all international students with support, engagement and community links from before you arrive until the day you successfully graduate.

After you accept your offer, we'll be in touch to answer any questions you have before your flight: what it's like to live and study in Australia, how to find accommodation and more.

Once you arrive, we provide an orientation to give you all the essential information you need to get started at Federation University.

If you ever have questions or problems and you don't know who to speak to, we provide individualised support to help you overcome challenges and access other services. Get in touch if you're unsure about anything, you can find us at all major campuses and we're fully available online.

[federation.edu.au/international/international-student-advisory](https://www.federation.edu.au/international/international-student-advisory)



Experience uni life

Student representation

The Student Senate is your voice at Federation. They work hard to improve your student experience, influencing student policies and the development of your physical, cultural and technological learning environments. [federation.edu.au/student-senate](https://www.federation.edu.au/student-senate)

Sports clubs and societies

At Federation University, you can learn a new sport, play socially or even represent the University. A wide range of social, cultural, sporting and special interest clubs, groups and societies are available, offering the chance to connect with other students and make the most of your university experience.

For further information about sport and recreation visit [federation.edu.au/sport](https://www.federation.edu.au/sport)

Student development

Federation provides exciting leadership and volunteer opportunities to help you develop your leadership and networking skills, and make new contacts while you're in Australia. We're passionate about helping students make positive changes on campus, in the local community and even internationally. We host regular events on campus and virtually, as well as offering professional development workshops.

"I was impressed to see that local people volunteered to support international students by arranging trips and clubs for us to take part in. Friends of mine who studied in bigger cities didn't always have that experience."

Duong Hoai Nhung, Vietnam
Master of Business Administration





"I chose Federation because of the course, but also because of the scholarships, which have really helped me financially. I haven't been here long, but it already feels like home. There's a great mix of people from different backgrounds and cultures, including students from my own country. From the day I arrived, I haven't felt homesick at all."

Aneena Baby
India

"I wanted to study abroad to gain more experience and learn about the differences in education. The course has been great so far. The classes are small, around 10-12 people, and the lecturers are really helpful and supportive. There are great facilities and places to study, and I always feel welcome on campus. The tuition fees are also quite affordable, especially with the scholarship I receive."

Imelda Verawati
Indonesia

"With an accommodation scholarship, I stayed at Fedliving Berwick for one year. Securing a scholarship really helped me feel less stressed about finances and living arrangements – I really appreciated it. Living on campus also meant I met a lot of friends from different countries, learn more about their cultures and gave me many good memories. *It was a great experience!*"

Philip Lin
China

Scholarships

At Federation University Australia, we're driven to make a real difference to the lives of every student who studies with us. That's why all new international students enrolled in an undergraduate or postgraduate coursework program in 2023 will receive financial support to help them with their higher education. We support people from all walks of life – helping to build the communities we're proud to be a part of.

Global Pathway Scholarship

The Global Pathway Scholarship celebrates the inceptive spirit of international students. All new international students commencing a foundation or diploma program in 2023 will receive a **guaranteed 20% tuition fee scholarship** (up to the value of \$6,000) for the full duration of their program.

Global Innovator Scholarship

The Global Innovator Scholarship celebrates the enterprising spirit of international students. All new international students commencing an undergraduate or postgraduate coursework program in 2023 will receive a **guaranteed 20% tuition fee scholarship** (AU\$9,000 to AU\$26,000) for the full duration of their degree.

Global Excellence Scholarship

The Global Excellence Scholarship celebrates the academic achievement of international students. New international students with an outstanding academic background will receive a **25% tuition fee scholarship** (AU\$11,000 to AU\$32,500) for the full duration of their degree.

Pathway to Victoria Scholarship

Valued at up to \$2,500 and exclusive to those students that choose to study a higher education program in Victoria, the Pathway to Victoria Scholarship is to support international students undertaking English language, pathway programs or foundation courses before beginning their main undergraduate or postgraduate (master by coursework) degree in Victoria. This scholarship is issued towards the tuition of the program.

Accommodation Support Scholarship

Living on campus is a great way to settle into life at Federation. New international students may be eligible for our Accommodation Support Scholarship to live on campus in Ballarat, Berwick or Gippsland. **Value is up to AU\$4,000** for a year.

Other scholarships, such as Foundation Scholarships and Destination Australia Awards may also be available. For full details of scholarships, including eligibility criteria and terms and conditions, visit [federation.edu.au/international/scholarships](https://www.federation.edu.au/international/scholarships)



Work Integrated Learning

Across all programs and courses at Federation, Work Integrated Learning (WIL) may be real or simulated and can occur in the workplace, at the University, online or face-to-face. Other opportunities include voluntary placements, industry-based projects, simulated work experiences and programs where students may undertake a placement for up to 12 months with a host organisation in the same field as their studies such as nursing, education, psychology and social work. Visit [federation.edu.au/wil](https://www.federation.edu.au/wil)

A placement is a smart way to boost your employability and meet the kind of people you'll be working with in the field. With our strong connections, we partner you with leading businesses and organisations.

Various scholarships are available to assist students on placements. Visit [federation.edu.au/scholarships](https://www.federation.edu.au/scholarships)



Industry connections

At Federation University we are imbedded into the fabric of the communities we serve. We understand that you need real world experience along with your degree to achieve your goals, and that's why we have partnered up with vital partners within the community.

All our courses are regularly assessed to ensure strong industry relevance so you can incorporate academic theory into real-life work situations. Our priority is to deliver the highest quality student experience, which means our graduates become effective global citizens wherever they choose to live and work.

Work placement opportunities

We have close connections with a wide range of industry partners, offering excellent employment outcomes and recognition for our high-performing graduates. Across our institutes, the vast majority of courses provide practical experience through industry placements or Work Integrated Learning (WIL) components.

Industry projects

Students thrive during industry project opportunities that are available both face to face and online in many study areas. During the pandemic, students from our Brisbane campus participated in an online project with industry partner River City Labs to solve real-world problems for start-up businesses, gaining valuable work experience and practical skills.

River City Labs is a premium Tech Startup Incubator in Queensland who works with the best and brightest entrepreneurs and technologists who are creating the future of the world and solving problems on a global scale.

Partnerships with industry strengthened

We're proud to be the home of a new \$9.5 million Business Centre of Excellence. Due for completion in late 2022, the centre will feature a range of learning and teaching spaces including cutting edge technology such as IBM-Watson's Internet of Things (IoT), facilities for researchers and spaces for community and industry engagement.

Launched in 2021, our partnership with AWS Cloud supports delivery of our new Master of Applied Cyber Security degree. Students will learn through customised courses related to cloud environments and access the latest technologies used in modern workplaces.



Celebrating a 25 year partnership with IBM

IBM, one of the world's leading technology companies, has been an anchor tenant of our Ballarat Technology Park since 1995. From these state-of-the-art facilities, IBM provides its clients with innovative Information and Communications Technology (ICT) services across the Asia Pacific.

Federation University and IBM share a special partnership that has been in place for over 25 years. Together, we work closely in IT course delivery and in providing work placement opportunities for our IT and Business students. IBM team members teach in our Bachelor of Information Technology (Professional Practice) course, sharing their invaluable experience. In return, IBM has access to a pool of talented Federation students from which to recruit permanent employees, people who are already familiar with the company's culture and processes. As part of this, successful students are able to access a special "earn as you learn" scholarship with IBM, giving them the unique insights offered through being in a global business.

Industry experts close by

Our Technology Parks, based at the Mt Helen and SMB campuses are home to major organisations including IBM®, Ernst & Young and the Fiona Elsey Cancer Research Institute. The new Morwell Innovation Centre is near our Gippsland Campus, furthering the reach of our collaboration with business and the community.

In Brisbane, we make full use of industry connections through an extensive network of partnerships with the city's leading businesses. Additionally, we connect students to partners through industry-integrated learning programs, specific to their degree. Leading local industry partners include River CityLabs and Arc.

Our industry partners include:



Study abroad and exchange

Federation University's study abroad and exchange programs offer the chance to become immersed in a totally different environment.

This enriching experience will enable you to see and do things you wouldn't expect and meet people who have grown up in a different culture. When you study abroad, you have a unique opportunity to make friends with people from all kinds of different cultures and learn about other countries and customs.

While living abroad you'll be able to try new foods, hear traditional music, have a go at local activities and explore everything else your host culture has to offer. It's also fascinating to learn and see your own culture through the eyes of somebody else's - you can learn a lot about yourself and your home country this way.

Eligible study abroad and exchange students from Federation University's official exchange institutions are welcome to enrol in either one or two semester programs in a wide range of academic areas. Students gain academic credit at a host institution while remaining enrolled with Federation University.

Why study abroad? This time may be the only opportunity you'll ever get to travel abroad for a long period of time. Eventually you will find a job and career, and the opportunity to study abroad may turn out to be a once in a lifetime opportunity.

Take this opportunity to travel the world with no commitments but to study and learn about new cultures. Studying abroad is an experience unlike any other.

The exchange and study abroad program is subject to Australia's travel restrictions. Please visit the Australian Government website for more information on international travel [covid19.homeaffairs.gov.au](https://www.covid19.homeaffairs.gov.au)

Find out more at [federation.edu.au/studyabroad](https://www.federation.edu.au/studyabroad)

"By integrating into the community and connecting with the locals, we gained far greater insights into the culture and the way of life for the Fijians than we could ever achieve as a tourist. It is with this experience that we take home a lasting connection to this community, and therefore a heightened awareness of the things we can do to help our Pacific neighbours. There is no better way to appreciate the complexity of a global economy than to leave your local community and explore it for yourself."

Karly McCaskill
Fiji International Business Trip,
Master of Business Administration



"This program was such a rewarding experience and a trip I will never ever forget. Personally, I feel as though I have gained so much more confidence and was able to develop a better understanding about my own goals and what direction I wish to head in once I finish this degree."

Tira Warn
New Columbo Plan trip to Nepal,
Bachelor of Veterinary and Wildlife Science



Alumni and Benefits



Dr Kiran Mazumdar-Shaw AM

Distinguished Alumna (2015)

Dr Kiran Mazumdar-Shaw has been named among TIME magazine's 100 most influential people in the world and received numerous international awards for her contributions to biotechnology. In 2020, Dr Mazumdar-Shaw was awarded an Honorary Member within the Order of Australia (AM) for her contribution in advancing the Australia-India bilateral relationship, as well as being awarded EY World Entrepreneur of the Year. She is a Distinguished Alumna of Federation University.

Dr Mazumdar-Shaw graduated from the University in 1975 as a Master Brewer with a Graduate Diploma in Malting and Brewing.

The only female student on the program, her diligence shone through as she came top of the class.

Dr Mazumdar-Shaw became India's first female brew-master upon her graduation. However, with few career opportunities available to women in the brewing industry at the time, she turned her skills to the emerging biotechnology sector.

In 1978 she joined Biocon Biochemicals Ltd as a trainee manager, subsequently establishing Biocon India Ltd in collaboration with the Irish company. Dr Mazumdar-Shaw's experience in the brewing industry underpinned the co-invention of a unique cauldron based on fermentation techniques that led to the development of Biocon's now patented biotechnology reactor.

Biocon has since evolved into a highly successful biopharmaceutical enterprise focused on healthcare and committed to reducing therapy costs of chronic diseases such as diabetes and cancer. Through innovative products and research services, it enables access to affordable healthcare for patients, partners and healthcare systems across the globe.



Sanjay Bharwani

International Alumnus of the Year (2020)

Sanjay Bharwani graduated in 1994 with a Bachelor of Technology degree from the University of Ballarat (now Federation University). He has had outstanding professional achievement throughout his career in banking and corporate consultancy, leading major strategic initiatives and improving organisational effectiveness, productivity and management capabilities at PT Bank Mandiri and other major organisations

After graduating, Sanjay returned home to Jakarta, Indonesia, and quickly found work as a lecturer in IT diploma programs, applying the skills and knowledge he had learnt in Australia. With his language skills, cultural awareness and excellent business and technical acumen, Sanjay was headhunted in 1995 to become Client Services Manager at the Australian Embassy in Jakarta.

This led on to further senior management positions at major IT and finance companies including Accenture, Willis Towers Watson, PermataBank, Bank BTPN and Bank Mandiri, where he worked as Senior Executive Vice President, Chief Human Capital Officer and Chief Corporate Transformation Officer.

Recently, Sanjay left his role at PT Bank Mandiri, Indonesia's largest bank, to found and direct Bester & Co., a business performance improvement consultancy firm.

Over the past two decades, Sanjay has lived and worked in over a dozen countries but still retains fond memories of life in Ballarat.

'I loved the city and got to know so many local and international friends. The campus was very welcoming. I knew all my lecturers well and spent time as President of the Ballarat Overseas Student Association.'



Emily Situ

International Alumna of the Year (2018)

Emily Situ graduated from Federation University's Master of Business Administration (MBA) degree in 2005 and has gone on to a highly successful career in marketing. She currently works as Branding Director for Overseas Markets at Country Garden, the largest property development company in China. In 2018, Emily returned to Federation University to accept the award of International Alumna of the Year.

Before applying to Federation University, Emily worked as a Marketing Officer for a government organisation in Hong Kong. *'I felt a need to study and strengthen my knowledge,'* she says, *'and an MBA is a popular path to improving your management skills.'*

'I remember being attracted to Ballarat to experience the real Australia. I didn't want to travel abroad just to live in a big city with many other Chinese people. I wanted to meet people from different backgrounds, and I was attracted to the reputation of the University, which is highly-rated for teaching quality and student satisfaction.'

Emily especially enjoyed the small class sizes, personalised learning and diversity of other students. *'One thing that was new for me was that the course didn't have a fixed group of classmates. Every subject had different students. The range of ages and nationalities surprised me at first, but it was wonderful to learn from everyone's varied work and life experiences.'*

Looking back, Emily says that her experience at Federation University changed her in two main ways. *'It gave me more confidence in my work and made me more independent. The way of thinking I developed at Federation Business School really helped me to develop my career. The MBA enabled me to improve my strategic thinking and develop my management style. I learned how to open my mind and think outside the box, which is something I'd never really done. I returned to China more confident in my abilities and quickly found a job as Team Leader at a major PR agency.'*

Benefits

As a member of the Federation University Alumni, there are many ongoing benefits to enjoy whether you choose to stay local, within the country or even internationally.

These benefits include:

Federation Alumni Library membership

Just because you've left our University doesn't mean you lose the valuable resources of the University Library. Alumni Library membership enables you to access selected electronic resources and borrow library items.

Unisports Alumni membership (gym and swim)

Unisports membership is available. Unisports asks that all members provide evidence of their alumni membership when applying for Alumni Unisports membership.

A wide range of discounts including vehicle rentals; international travel; translating and interpreting services and an extensive list of retailers such as The Iconic

...and much more.

For more details on all things alumni, visit [federation.edu.au/connect/alumni](https://www.federation.edu.au/connect/alumni)

English pathways and entry requirements

If you don't meet the English requirements for the course of your choice, you have the opportunity to find a pathway with an English and Academic Preparation course.

Our English and Academic Preparation courses are designed to assist international students to gain entry into higher education degrees that require an Academic IELTS of 6.0, 6.5 or 7.0. Study can be as short as 5, 10, 15 or 20 weeks, giving students a strong foundation for academic success.

English and Academic Preparation courses run prior to the commencement of each semester at our Ballarat and Berwick campuses. Classes are scheduled for 20 hours of contact time each week. Additional independent study is expected by students to meet the minimum standards to pass.

Learning tasks and assessments

Our English and Academic Preparation courses aim to enhance and develop students' English language skills and knowledge of western academic culture. During the course, students will develop skills in:

- Academic reading and writing
- Oral presentations and tutorial discussions
- Academic vocabulary and assessments
- Research and study techniques

A range of learning tasks and assessment methods will enable students to demonstrate competency. Students are generally not required to sit an Academic IELTS test after their satisfactory completion of English and Academic Preparation.

English and Academic Preparation English and Academic Preparation

LOCATION	DURATION	CRICOS
Mt Helen (Ballarat), Berwick (Melbourne)	5 - 20 weeks	050427C
COURSE FEE		
5 weeks \$2,050 10 weeks \$4,100 15 weeks \$6,150 20 weeks \$8,100		

Learn more about English language requirements and acceptable English tests at [federation.edu.au/international/study-at-federation/apply](https://www.federation.edu.au/international/study-at-federation/apply)



Pathway courses

With Fed's new Pathway programs, you can get into the degree that you want quicker and easier than ever before.

Diploma Pathways

Our range of diploma programs give you the support you need to pathway into the second year of an undergraduate degree, saving you time and money while meeting like minded students in a small classroom setting.

Learn more about pathway courses and our foundation studies program at [study.federation.edu.au/area/Pathways](https://www.study.federation.edu.au/area/Pathways)

Diploma of Business (Higher Education)

The Diploma of Business (Higher Education) allows students to pathway to a Bachelor of Business and higher education. This diploma is a globally recognised program where students gain real world knowledge to tackle common problems faced by businesses. Students will also learn about marketing, economics, human resources and the complex environments that businesses operate within. Upon completion, graduates can be launched into their second year of the Bachelor of Business, where graduates can choose a major, should they wish to. Graduates that complete both the Diploma and Bachelor of Business will receive two qualifications within the same amount of time as completing the Bachelor of Business.

LOCATION	INTAKE
Mt Helen (Ballarat)	February, July, November
DURATION	CRICOS
2 Semesters	109401M
ANNUAL FEE	
\$26,300	
ENTRY REQUIREMENTS	
Year 12 entry: Successful completion of a Victorian Certificate of Education (VCE) or it's equivalent, such as an interstate or International Year 12 qualification. Provision may exist through other pathways including mature age entry or recognition of prior learning. Overall Academic IELTS score of 5.5, with no band score less than 5.0, or equivalent.	

Diploma of Engineering (Higher Education)

A pathway through to the Bachelor of Engineering, the Diploma of Engineering (Higher Education) is a globally recognised, hands on and practical program where students develop the specialist knowledge and skills they'll need to solve problems faced by the engineering industry. Graduates will hone their mathematic and science abilities in a supportive and helpful environment, before being spring boarded into the second year of the undergraduate program.

LOCATION	INTAKE
Mt Helen (Ballarat)	February, July, November
DURATION	CRICOS
2 Semesters	103400A
ANNUAL FEE	
\$29,600	
ENTRY REQUIREMENTS	
Year 12 entry: Successful completion of a Victorian Certificate of Education (VCE) or it's equivalent, such as an interstate or International Year 12 qualification. Provision may exist through other pathways including mature age entry or recognition of prior learning. Overall Academic IELTS score of 5.5, with no band score less than 5.0, or equivalent.	

Diploma of Information Technology (Higher Education)

Within the Diploma of Information Technology (Higher Education), students learn an array of skills in IT with a focus on fundamentals of software development, problem solving, networking and security. The Diploma of Information Technology (Higher Education) can act as a pathway to the Bachelor program, where graduates that successfully complete this program can then commence their second year of a Bachelor of Information Technology, receiving two qualifications in the same amount of time. The Diploma is a highly regarded program, where students will be armed with the knowledge to tackle real world problems encountered within a complex interconnected online environment.

LOCATION	INTAKE
Mt Helen (Ballarat)	February, July, November
DURATION	CRICOS
2 Semesters	109402K
ANNUAL FEE	
\$25,100	
ENTRY REQUIREMENTS	
Year 12 entry: Successful completion of a Victorian Certificate of Education (VCE) or it's equivalent, such as an interstate or International Year 12 qualification. Provision may exist through other pathways including mature age entry or recognition of prior learning. Overall Academic IELTS score of 5.5, with no band score less than 5.0, or equivalent.	

Courses, costs and locations are subject to variation. For the most up to date information, visit [study.federation.edu.au](https://www.study.federation.edu.au)

Courses 2023

STUDY TYPE	LOCATION	DURATION (YEARS)	IELTS	CRICOS CODE	FEES (ANNUALLY)	PAGE
PATHWAY PROGRAMS						
PC English and Academic Preparation	★ ★	5W	Intermediate: 6.0/5.5 Advanced: 6.5/6.0 Graduate: 6.5/6.5 or 7.0/6.5	050427C	\$2,050	24
PC English and Academic Preparation	★ ★	10W	Intermediate: 6.0/5.5 Advanced: 6.0/6.0 Graduate: 6.5/6.0	050427C	\$4,100	24
PC English and Academic Preparation	★ ★	15W	Intermediate: 5.5/5.0 Advanced: 6.0/5.5 Graduate: 6.5/6.0	050427C	\$6,150	24
PC English and Academic Preparation	★ ★	20W	Intermediate: 5.0/5.0 Advanced: 5.5/5.5 Graduate: 6.0/6.0	050427C	\$8,100	24
PC Diploma of Business (Higher Education)	★	2 S	5.5/5.0	109401M	\$26,300	25
PC Diploma of Engineering (Higher Education)	★	2 S	5.5/5.0	109400A	\$29,600	25
PC Diploma of Information Technology (Higher Education)	★	2 S	5.5/5.0	109402K	\$25,100	25

BUSINESS						
PC Diploma of Business (Higher Education)	★	2 S	5.5/5.0	109401M	\$26,300	31
U Bachelor of Business	★ ★ ★ ★	3	6.0/6.0	106613A	\$26,300	31
U Bachelor of Business (Honours)	★	1	6.0/6.0	N/A	\$26,300	32
U Bachelor of Professional Accounting	★ ★ ★ ★	3	6.0/6.0	102356A	\$26,300	32
P Master of Business Administration (Health Services Management)	★	2	6.0/6.0	109145M	\$29,200	32
P Master of Business Administration (International Business)	★ ★	2	6.0/6.0	109146K	\$29,200	32
P Master of Professional Accounting	★ ★	2	6.0/6.0	085211G	\$29,200	33

EDUCATION AND EARLY CHILDHOOD						
U Bachelor of Education (Early Childhood and Primary)	★ ★ ★	4	7.0*	097978F	\$25,000	35
U Bachelor of Education (Early Childhood Education)	★ ★ ★	3	7.0*	107828M	\$25,000	35
U Bachelor of Education (Primary)	★ ★ ★	4	7.0*	089465J	\$25,000	36
U Bachelor of Education Studies	★ ★ ★	3	6.0/6.0	091968A	\$25,000	36
U Bachelor of Outdoor and Environmental Education	★ ★	3	6.0/6.0	085612B	\$28,900	36
U Bachelor of Secondary Education	★ ★ ★	4	7.0*	106091M	\$25,000	36
U Bachelor of Secondary Education (Health and Physical Education Teaching)	★ ★ ★	4	7.0*	106092K	\$25,000	37
U Bachelor of Sport, Physical and Outdoor Education	★ ★ ★	3	6.0/6.0	106308K	\$25,000	37
P Graduate Certificate in Education Studies	★	0.5	6.5/6.0	0100899	\$13,400 C	37
P Graduate Diploma of Education Studies	★	1	6.5/6.0	0100900	\$26,800	38
P Master of Teaching (Early Childhood)	★	2	7.0*	0100320	\$26,800	38
P Master of Teaching (Primary)	★	2	7.0*	097877M	\$26,800	38
P Master of Teaching (Secondary)	★	2	7.0*	097878K	\$26,800	38

*7.0/7.5 in Speaking and Listening, 6.5 in Reading and Writing

STUDY LEVEL	LOCATION	*Online learning is only for students not on a TU 500 visa	DURATION (YEARS)	FEES (ANNUALLY)
PC Pathway course	★ Mt Helen Campus (Ballarat)		PT Part-time study	C Per certificate
U Undergraduate bachelor degree	★ Berwick Campus	★ Churchill Campus (Gippsland)	S Semesters	
P Postgraduate studies	★ Camp Street, Arts Academy (Ballarat)	★ Brisbane Campus	W Weeks	
		★ Online Learning+		

STUDY TYPE	LOCATION	DURATION (YEARS)	IELTS	CRICOS CODE	FEES (ANNUALLY)	PAGE
ENGINEERING						
PC Diploma of Engineering (Higher Education)	★	2 S	5.5/5.0	109400A	\$29,600	40
U Bachelor of Engineering (Civil) (Honours)	★ ★	4	6.0/6.0	085617G	\$29,600	40
U Bachelor of Engineering (Electrical and Information Engineering) (Honours)	★ ★	4	6.0/6.0	0100639	\$29,600	41
U Bachelor of Engineering (Mechanical) (Honours)	★	4	6.0/6.0	085618G	\$29,600	41
U Bachelor of Engineering (Mining) (Honours)	★	4	6.0/6.0	085619F	\$29,600	41
P Graduate Certificate in Community Energy and Micro-Grid	★ ★	0.5	6.0/6.0	104935K	\$14,800 C	41
P Graduate Certificate in Maintenance Management	★	1	6.0/6.0	N/A	\$14,800 C	42
P Graduate Certificate in Reliability Engineering	★	1	6.0/6.0	N/A	\$14,800 C	42
P Graduate Diploma of Engineering Maintenance Management	★	2 PT	6.0/6.0	N/A	\$26,900	42
P Graduate Diploma of Mining	★ ★	2	6.0/6.0	085622M	\$22,200	42
P Master of Engineering Project Management	★	3	6.0/6.0	0100640	\$29,600	42
P Master of Engineering Technology (Civil Engineering)	★	2	6.0/6.0	079924C	\$29,600	42
P Master of Engineering Technology (Mechanical Engineering)	★	2	6.0/6.0	079927M	\$29,600	43
P Master of Engineering Technology (Mechatronics and Industrial Automation)	★	2	6.0/6.0	106472J	\$29,600	43
P Master of Engineering Technology (Mining Engineering)	★ ★	2	6.0/6.0	079928K	\$29,600	43
P Master of Engineering Technology (Renewable Energy and Electrical Power Systems)	★	2	6.0/6.0	0100637	\$29,600	43
P Master of Maintenance and Reliability Engineering	★	2	6.0/6.0	N/A	\$29,600	43

HEALTH						
U Bachelor of Nursing	★ ★ ★	3	7.0/7.0	088144A	\$31,400	45
P Graduate Certificate in Health (Health Services Management)	★	0.5	7.0/6.5	N/A	\$11,500 C	46
P Graduate Certificate in Public Health	★ ★	0.5	6.5/6.0	102484D	\$11,500 C	46
P Graduate Diploma of Public Health	★ ★ ★	1	6.5/6.0	102483E	\$23,000	46
P Master of Health (Health Leadership)	★	2	7.0/6.5	097976G	\$23,000	46
P Master of Health (Health Services Management)	★	2	7.0/6.5	N/A	\$23,000	47
P Master of Health (Research Practice)	★	2	7.0/6.5	097977G	\$23,000	47
P Master of Health (Workplace Health and Safety)	★	2	7.0/6.5	N/A	\$23,000	47
P Master of Public Health	★ ★ ★	2	6.5/6.0	102482F	\$23,000	47

Courses, costs and locations are subject to variation. For the most up to date information, visit study.federation.edu.au

Courses 2023

STUDY TYPE		LOCATION	DURATION (YEARS)	IELTS	CRICOS CODE	FEES (ANNUALLY)	PAGE
HUMANITIES, SOCIAL SCIENCES, CRIMINOLOGY AND SOCIAL WORK							
U	Bachelor of Arts (Humanities) (Honours)	★ ★	1	6.0/6.0	097882C	\$22,200	49
U	Bachelor of Arts (Social Sciences) (Honours)	★ ★	1	6.0/6.0	097883B	\$22,200	49
U	Bachelor of Community and Human Services	★ ★ ★	3	6.0/6.0	085212G	\$24,800	50
U	Bachelor of Criminology and Criminal Justice	★ ★ ★ ★	3	6.0/6.0	0100646	\$24,800	50
U	Bachelor of Criminal Justice Management	★ ★ ★ ★	3	6.5/6.0	107023D	\$24,800	50
P	Graduate Certificate in Social and Community Services	★ ★ ★	0.5	6.0/6.0	0102153	\$13,300 C	51
P	Master of Social Work (Qualifying)	★ ★	2	6.5/6.5	085213F	\$26,600	51

STUDY TYPE		LOCATION	DURATION (YEARS)	IELTS	CRICOS CODE	FEES (ANNUALLY)	PAGE
INFORMATION TECHNOLOGY							
PC	Diploma of Information Technology (Higher Education)	★	2 S	5.5/5.0	109402K	\$25,100	54
U	Bachelor of Information Technology	★ ★ ★ ★ ★	3	6.0/5.5	074009A	\$25,100	54
U	Bachelor of Information Technology (Big Data and Analytics)	★ ★ ★	3	6.0/5.5	092056M	\$25,100	54
U	Bachelor of Information Technology (Business Information Systems)	★ ★ ★	3	6.0/5.5	092106F	\$25,100	54
U	Bachelor of Information Technology (Networking and Security)	★ ★ ★	3	6.0/5.5	092055A	\$25,100	55
U	Bachelor of Information Technology (Professional Practice)	★	4	6.0/5.5	049564D	\$25,100	55
U	Bachelor of Information Technology (Software Development)	★ ★	3	6.0/5.5	092108D	\$25,100	55
P	Graduate Certificate in Cognitive Enterprise	★	0.5	6.0/5.5	107471B	\$13,450 C	55
P	Graduate Certificate in Enterprise Systems	★ ★	0.5	6.0/6.0	106414H	\$13,450 C	56
P	Graduate Diploma of Cognitive Enterprise	★	1	6.0/6.0	107472A	\$26,900	56
P	Master of Applied Cyber Security	★ ★ ★ ★	2	6.0/6.0	102480H	\$26,900	56
P	Master of Cognitive Enterprise	★ ★	2	6.0/6.0	107283F	\$26,900	56
P	Master of Data Science	★ ★	2	6.0/6.0	104808F	\$26,900	57
P	Master of Technology (Enterprise Systems and Business Analytics)	★ ★	2	6.0/6.0	095030G	\$26,900	57
P	Master of Technology (Software Engineering)	★ ★	2	6.0/6.0	080497G	\$26,900	57

STUDY TYPE		LOCATION	DURATION (YEARS)	IELTS	CRICOS CODE	FEES (ANNUALLY)	PAGE
PERFORMING ARTS, VISUAL ARTS AND DESIGN							
U	Bachelor of Arts (Creative Arts) (Honours)	★ ★	1	6.0/6.0	097880E	\$22,200	59
U	Bachelor of Performing Arts	★	3	6.0/6.0	0100642	\$28,100	59
U	Bachelor of Visual Arts	★	3	6.0/6.0	106032M	\$28,100	59

STUDY TYPE		LOCATION	DURATION (YEARS)	IELTS	CRICOS CODE	FEES (ANNUALLY)	PAGE
PSYCHOLOGY							
U	Bachelor of Psychological Science	★ ★	3	7.0/6.5	055553A	\$26,500	61
U	Bachelor of Psychological Science (Honours)	★ ★	1	7.0/6.5	088971K	\$26,500	61

STUDY TYPE		LOCATION	DURATION (YEARS)	IELTS	CRICOS CODE	FEES (ANNUALLY)	PAGE
SCIENCE							
U	Bachelor of Biomedical Science	★ ★ ★	3	6.0/6.0	062139A	\$28,600	62
U	Bachelor of Geoscience	★	3	6.0/6.0	088139J	\$28,600	62
U	Bachelor of Environmental and Conservation Science	★ ★ ★	3	6.0/6.0	088140E	\$28,600	63
U	Bachelor of Science	★ ★	3	6.0/6.0	062141G	\$28,600	63
P	Bachelor of Science (Honours)	★ ★ ★	1	6.0/6.0	088661B	\$28,600	63
U	Bachelor of Sustainable Food Systems	★ ★	3	6.0/6.0	106562G	\$28,600	63
U	Bachelor of Veterinary and Wildlife Science	★ ★ ★	3	6.0/6.0	088138K	\$28,600	63

STUDY TYPE		LOCATION	DURATION (YEARS)	IELTS	CRICOS CODE	FEES (ANNUALLY)	PAGE
SPORT, HEALTH, PHYSICAL AND OUTDOOR EDUCATION							
U	Bachelor of Exercise and Sport Science	★	3	7.0/7.0	063657D	\$31,600	65
U	Bachelor of International Sport Management	★	3	6.0/6.0	N/A	\$18,300	65
P	Master of Clinical Exercise Physiology	★	1.5	7.0/7.0	083032E	\$31,600	65

STUDY TYPE		LOCATION	DURATION (YEARS)	IELTS	CRICOS CODE	FEES (ANNUALLY)	PAGE
HIGHER DEGREES BY RESEARCH							
P	Master of Applied Science (Biological Science)	★ ★	1.5	6.5/6.0	001501D	\$28,800	67
P	Master of Applied Science (Psychology)	★ ★	1.5	6.5/6.0	014682J	\$28,800	67
P	Master of Arts (by research)	★ ★ ★	1.5	6.5/6.0	041559K	\$23,600	67
P	Master of Arts (by research)	★	1.5	6.5/6.0	044995K	\$23,600	67
P	Master of Business (Research)	★ ★ ★	1.5	6.5/6.0	023221G	\$23,600	67
P	Master of Computing	★ ★ ★	1.5	6.5/6.0	052879C	\$23,600	67
P	Master of Education	★ ★	1.5	6.5/6.0	092210F	\$23,600	67
P	Master of Engineering Science	★	1.5	6.5/6.0	015134G	\$28,800	67
P	Master of Health Research	★ ★ ★	1.5	6.0/6.0	108313H	\$23,600	67
P	Master of Mathematical Sciences (Research)	★ ★	1.5	6.5/6.0	052605G	\$23,600	67
P	Master of Nursing (by Research)	★ ★ ★	1.5	6.5/6.0	092872A	\$23,600	67
P	Doctor of Philosophy (Business)	★ ★ ★	3	6.5/6.0	033922G	\$23,600	67
P	Doctor of Philosophy (Education)	★ ★	3	6.5/6.0	016654G	\$23,600	67
P	Doctor of Philosophy (Engineering)	★ ★	3	6.5/6.0	023234C	\$28,800	67
P	Doctor of Philosophy (Human Movement and Sport Sciences)	★ ★	3	6.5/6.0	026139M	\$28,800	67
P	Doctor of Philosophy (Humanities and Social Sciences)	★ ★ ★	3	7.0/6.5	023232E	\$23,600	67
P	Doctor of Philosophy (Information Technology)	★ ★ ★	3	6.5/6.0	023229M	\$23,600	67
P	Doctor of Philosophy (Mathematical Science)	★ ★	3	6.5/6.0	092058J	\$23,600	67
P	Doctor of Philosophy (Nursing)	★ ★ ★	3	6.5/6.0	092871B	\$23,600	67
P	Doctor of Philosophy (Psychology)	★ ★	3	6.5/6.0	081098C	\$28,800	67
P	Doctor of Philosophy (Physical Sciences)	★	3	6.5/6.0	016653J	\$28,800	67
P	Doctor of Philosophy (Science)	★ ★	3	6.5/6.0	044127K	\$28,800	67
P	Doctor of Philosophy (Visual and Performing Arts)	★	3	6.5/6.0	023233D	\$23,600	67
P	Doctor of Philosophy (Victorian Institute of Occupational Safety and Health)	★ ★	3	6.5/6.0	096209M	\$28,800	67

STUDY LEVEL	LOCATION	*Online learning is only for students not on a TU 500 visa	DURATION (YEARS)	FEES (ANNUALLY)
PC Pathway course	★ Mt Helen Campus (Ballarat)		PT Part-time study	C Per certificate
U Undergraduate bachelor degree	★ Berwick Campus	★ Churchill Campus (Gippsland)	S Semesters	
P Postgraduate studies	★ Camp Street, Arts Academy (Ballarat)	★ Brisbane Campus	W Weeks	
		★ Online Learning+		

Courses, costs and locations are subject to variation. For the most up to date information, visit study.federation.edu.au

Business

Be a new kind of leader

Confident, competent and industry-ready are just a few words to describe graduates of our business degree. While studying a Federation business degree, you can expect to develop your skills in the classroom and put those skills into practice with real-world projects and engagement with industry.

At Fed we believe that to be successful, graduates must not only know the principles and practices of business but also 'soft skills' such as critical thinking, leadership, capacity to adapt to change and teamwork. This belief is translated into our coursework so that our students are fully prepared for their career.

Our lecturers are industry experts and are committed to delivering student-focussed, high-quality teaching and learning experiences. We also continually revise our courses to reflect changes, trends and global developments to ensure that our students receive the most up-to-date, relevant knowledge and skills.



STUDY TYPE	LOCATION	DURATION (YEARS)	FEES (ANNUALLY)
BUSINESS			
PC Diploma of Business (Higher Education)	★ Ballarat	2 S	\$26,300
U Bachelor of Business	★ Ballarat ★ Berwick ★ Gippsland ★ Online	3	\$26,300
U Bachelor of Business (Honours)	★ Online	1	\$26,300
U Bachelor of Professional Accounting	★ Ballarat ★ Berwick ★ Gippsland ★ Online	3	\$26,300
P Master of Business Administration (Health Services Management)	★ Brisbane	2	\$29,200
P Master of Business Administration (International Business)	★ Brisbane ★ Online	2	\$29,200
P Master of Professional Accounting	★ Brisbane ★ Online	2	\$29,200

PC Pathway course U Undergraduate bachelor degree P Postgraduate studies S Semesters ★ Online learning is only for students not on a TU 500 visa

Diploma of Business (Higher Education)

The Diploma of Business (Higher Education) allows students to pathway to a Bachelor of Business and higher education. This diploma is a globally recognised program where students gain real world knowledge to tackle common problems faced by businesses. Students will also learn about marketing, economics, human resources and the complex environments that businesses operate within. Upon completion, graduates can be launched into their second year of the Bachelor of Business, where graduates can choose a major, should they wish to. Graduates that complete both the Diploma and Bachelor of Business will receive two qualifications within the same amount of time as completing the Bachelor of Business.

LOCATION Mt Helen (Ballarat)	INTAKE February, July, November
DURATION 2 Semesters	CRICOS 109401M
	ANNUAL FEE \$26,300

ENTRY REQUIREMENTS

Year 12 entry: Successful completion of a Victorian Certificate of Education (VCE) or it's equivalent, such as an interstate or International Year 12 qualification. Provision may exist through other pathways including mature age entry or recognition of prior learning.
Overall Academic IELTS score of 5.5, with no band score less than 5.0, or equivalent.

Bachelor of Business

The Bachelor of Business is a contemporary degree developed in collaboration with industry and designed to meet the needs of businesses now and in the future. Businesses are facing an unprecedented number of challenges and opportunities stemming from digital disruption and the rapid adoption of new technologies. Graduates gain a solid foundation in business management, entrepreneurship, critical thinking, teamwork, leadership, creativity and innovation, and interpersonal skills. Choose from a range of focus areas, including banking and finance, marketing, cognitive enterprise and management. These skills are in high demand from employers and central to succeeding in the rapidly changing business world.

LOCATION Mt Helen (Ballarat), Berwick (Melbourne), Churchill (Gippsland), Online/Off-campus	INTAKE February, July	DURATION 3 years	CRICOS 106613A	ANNUAL FEE \$26,300
---	---------------------------------	----------------------------	--------------------------	-------------------------------

ENTRY REQUIREMENTS

The completion of Year 12 or equivalent.
Overall Academic IELTS score of 6.0, with no band score less than 6.0, or equivalent.

Courses, costs and locations are subject to variation. For the most up to date information, visit study.federation.edu.au



“My degree gave me the skills to work more effectively, and it was professionally accredited, so it made me eligible to enter the CPA and CA in Australia and New Zealand. It also gave me a great comparison between the Australian system and the Portuguese system, which is used in Timor-Leste. Since graduating and returning home, I’ve been working as an accountant and built strong connections between my firm and Australian companies and clients.”

Soimali Fernandes, Timor-Leste
Master of Professional Accounting graduate

Master of Professional Accounting

The Master of Professional Accounting (MPA) has been designed for students whose first degree is in a non-accounting field. It provides you with a comprehensive course of study in accounting theory and practice that is recognised by both CPA Australia and Chartered Accountants Australia and New Zealand, enabling you to pursue a pathway to qualification as a professional accountant. Other career outcomes include banker or stockbroker.

LOCATION Brisbane (Queensland), Online/Off-campus		INTAKE February, July, November
DURATION 2 years	CRICOS 085211G	ANNUAL FEE \$29,200
ENTRY REQUIREMENTS Completion of an undergraduate degree in a non-accounting discipline or overseas equivalent. Overall Academic IELTS score of 6.0, with no band score less than 6.0, or equivalent.		
PROFESSIONAL RECOGNITION Recognised by Certified Practising Accountants Australia (CPA Australia) and Chartered Accountants Australia and New Zealand.		

Bachelor of Business (Honours)

The Bachelor of Business (Honours) delivers graduates with advanced training necessary to conduct independent and high quality research in business. Graduates are equipped with critical thinking and problem solving skills applied to the creation of new knowledge that addresses business-related requirements and challenges.

LOCATION Online/Off-campus		INTAKE February, July
DURATION 1 year	CRICOS N/A	ANNUAL FEE \$26,300
ENTRY REQUIREMENTS Successful completion of a 3 year undergraduate degree in Business with a minimum credit average overall for second and third year courses plus a minimum distinction average for 3000 level courses. Overall Academic IELTS score of 6.0, with no band score less than 6.0, or equivalent.		

Bachelor of Professional Accounting

This comprehensive course is designed for people with an aptitude for numbers and desire to forge a professional accounting career. You will have the opportunity to undertake a practical placement, internship or project, making you more employable in the marketplace.

LOCATION Mt Helen (Ballarat), Berwick (Melbourne), Churchill (Gippsland), Online/Off-campus			
INTAKE February, July	DURATION 3 years	CRICOS 102356A	ANNUAL FEE \$26,300
ENTRY REQUIREMENTS Successful completion of Australian Year 12, or overseas equivalent. Provision for entry may exist through other pathways including mature age other special provisions or recognition of prior learning. Overall Academic IELTS score of 6.0, with no band score less than 6.0, or equivalent.			
PROFESSIONAL RECOGNITION Recognised by CPA Australia and Chartered Accountants Australia and New Zealand. Accredited with the Tax Practitioners Board allowing graduates to apply to become a registered tax agent.			

Master of Business Administration (Health Services Management)

Study the Master of Business Administration (Health Services Management) and become a leader in the health industry. You'll develop the skills and specialist knowledge needed to manage a multitude of various issues as they relate to the health care sector, including leadership, policy, practice and evidence based delivery. If you are currently working in the sector or aspiring to a management position, or have a non-health background with interest in the healthcare industry, this is the degree for you.

LOCATION Brisbane (Queensland)		INTAKE February, July, November
DURATION 2 years	CRICOS 109145M	ANNUAL FEE \$29,200
ENTRY REQUIREMENTS Successful completion of a bachelor degree or equivalent professional qualification or overseas equivalent. Applicants holding other academic qualifications and/or significant managerial work experience may also be granted. Overall Academic IELTS score of 6.0, with no band score less than 6.0, or equivalent.		

Master of Business Administration (International Business)

Study the Master of Business Administration (International Business) to become a world business leader. You'll develop the skills and specialist knowledge to be a manager within a multitude of areas, including leadership, policy, practice and evidence based delivery. If you are currently working in business or aspiring to a management position, this degree is for you.

LOCATION Brisbane (Queensland), Online/Off-campus		INTAKE February, July, November
DURATION 2 years	CRICOS 109146K	ANNUAL FEE 2 years
ENTRY REQUIREMENTS Successful completion of a bachelor degree or equivalent professional qualification or overseas equivalent. Applicants holding other academic qualifications and/or significant managerial work experience may also be granted. Overall Academic IELTS score of 6.0, with no band score less than 6.0, or equivalent.		



Education and Early Childhood

Shape a new generation

Few careers are as rewarding or crucial as teaching. But shaping young minds in a time of rapid social and technological change has its own set of challenges – where only the most confident, passionate and dedicated teachers can make a difference in the community.

These are the kind of people we aim to inspire. It's reflected in the level of support we offer and the dynamic nature of our education and early childhood degrees, all of which nurture critical and creative thinking, drive and collaboration – and importantly – the capacity to bring out the best in others.

As you study, you'll benefit from our close connections with regional educational institutions, ensuring a diverse and rewarding range of placement opportunities. And you'll enjoy our engaged teaching course, which incorporates Work Integrated Learning, internships, professional placements, international opportunities and community projects to enrich your experience.



Our professional recognition

To shape the next generation of teachers, it's important that our qualifications stand up in the industry. You'll find that many of our courses are either recognised or accredited by leading bodies and institutions, at state and national levels. These include the Australian Children's Education and Care Quality Authority (ACECQA), Australian Institute of Teaching and School Leadership (AITSL), and the Victorian Institute of Teaching (VIT).

STUDY TYPE		LOCATION	DURATION (YEARS)	FEES (ANNUALLY)
EDUCATION AND EARLY CHILDHOOD				
U	Bachelor of Education (Early Childhood and Primary)	★ Ballarat ★ Berwick ★ Gippsland	4	\$25,000
U	Bachelor of Education (Early Childhood Education)	★ Ballarat ★ Berwick ★ Gippsland	3	\$25,000
U	Bachelor of Education (Primary)	★ Ballarat ★ Berwick ★ Gippsland	4	\$25,000
U	Bachelor of Education Studies	★ Ballarat ★ Berwick ★ Gippsland	3	\$25,000
U	Bachelor of Outdoor and Environmental Education	★ Ballarat ★ Gippsland	3	\$28,900
U	Bachelor of Secondary Education	★ Ballarat ★ Berwick ★ Gippsland	4	\$25,000
U	Bachelor of Secondary Education (Health and Physical Education Teaching)	★ Ballarat ★ Berwick ★ Gippsland	4	\$25,000
U	Bachelor of Sport, Physical and Outdoor Education	★ Ballarat ★ Berwick ★ Gippsland	3	\$25,000
P	Graduate Certificate in Education Studies	★ Ballarat	0.5	\$13,400 C
P	Graduate Diploma of Education Studies	★ Ballarat	1	\$26,800
P	Master of Teaching (Early Childhood)	★ Ballarat	2	\$26,800
P	Master of Teaching (Primary)	★ Ballarat	2	\$26,800
P	Master of Teaching (Secondary)	★ Ballarat	2	\$26,800

U Undergraduate bachelor degree P Postgraduate studies S Semesters C Per certificate

Bachelor of Education (Early Childhood and Primary)

With this degree you'll gain the skills and knowledge you need to be a confident teacher in settings that range from pre-schools through to Year 6. You will undertake 110 days of supervised teaching placement in both early childhood and primary settings. Students must prove they meet the English language requirement as determined by the Victorian Institute of Teachers (VIT) and/or ACECQA to be eligible for registration.

LOCATION

Mt Helen (Ballarat), Berwick (Melbourne), Churchill (Gippsland)

INTAKE	DURATION	CRICOS	ANNUAL FEE
February, July	4 years	097978F	\$25,000

ENTRY REQUIREMENTS

Successful completion of Australian Year 12 with a final year Mathematics course, or overseas equivalent.
Overall Academic IELTS score of 7.0, with no band score less than 7.5 for Speaking and Listening and 6.5 for Reading and Writing, or equivalent.

EXTRA REQUIREMENTS

Visit study.federation.edu.au for details. Students must prove that they meet the English language requirement as determined by the Victorian Institute of Teaching (VIT) and/or ACECQA to be eligible for teacher registration.

PROFESSIONAL RECOGNITION

Australian Institute of Teaching and School Leadership (AITSL), Australian Children Education and Care Quality Authority (ACECQA), Victorian Institute of Teaching (VIT).

Bachelor of Education (Early Childhood Education)

Become a confident and qualified early childhood teacher with Federation University. You may be working in the early childhood field and want to upskill, straight out of school or changing careers. You will discover how young children learn and how you can develop and support their learnings in these critical early years. This is a hands-on course that will get you into the classroom for a minimum of 80 days of supervised teaching placement so you can put into practice what you have learnt.

LOCATION

Mt Helen (Ballarat), Berwick (Melbourne), Churchill (Gippsland)

INTAKE	DURATION	CRICOS	ANNUAL FEE
February	3 years	107828M	\$25,000

ENTRY REQUIREMENTS

Successful completion of Australian Year 12 with a final year Mathematics course, or overseas equivalent.
Overall Academic IELTS score of 7.0, with no band score less than 7.5 for Speaking and Listening and 6.5 for Reading and Writing, or equivalent.

EXTRA REQUIREMENTS

Visit study.federation.edu.au for details. Students must prove that they meet the English language requirement as determined by ACECQA to be eligible for teacher registration.

PROFESSIONAL RECOGNITION

Australian Children's Education and Care Quality Authority (ACECQA)



Bachelor of Education (Primary)

Help make amazing childhood experiences and inspire learning by joining us to become part of the next generation of primary teachers. During your degree, you will spend time observing students in classrooms and learn how to engage children in learning. The inclusive education stream will open up your career choices, giving you the opportunity to pursue a career in an additional needs school. This is a hands-on course that will get you into the classroom for a minimum of 80 days of supervised teaching placement so you can put into practice what you have learnt.

LOCATION Mt Helen (Ballarat), Berwick (Melbourne), Churchill (Gippsland)			
INTAKE February	DURATION 4 years	CRICOS 089465J	ANNUAL FEE \$25,000
ENTRY REQUIREMENTS Successful completion of Australian Year 12 with a final year Mathematics course, or overseas equivalent. Overall Academic IELTS score of 7.0, with no band score less than 7.5 for Speaking and Listening and 6.5 for Reading and Writing, or equivalent.			
EXTRA REQUIREMENTS Visit study.federation.edu.au for details.			
PROFESSIONAL RECOGNITION VIT (Victorian Institute of Teaching)			

Bachelor of Education Studies

If you did not meet the entry requirements to commence a teaching degree, this course is for you. At the completion of first year, you may be eligible to apply for a transfer into the second year of a Federation teaching degree. This means that you may still qualify as a VIT registered teacher within 4 years of study. Otherwise continue this course and qualify to work in many roles as an Education Officer, Project Officer or Education Support Officer (Integration Aide) working to support students within a school setting. You will complete a total of 40 placement hours during the degree

LOCATION Mt Helen (Ballarat), Berwick (Melbourne), Churchill (Gippsland)			
INTAKE February, July	DURATION 3 years	CRICOS 091968A	ANNUAL FEE \$25,000
ENTRY REQUIREMENTS Successful completion of Australian Year 12 with a final year Mathematics course, or overseas equivalent. Overall Academic IELTS score of 6.0, with no band score less than 6.0, or equivalent.			
EXTRA REQUIREMENTS Visit study.federation.edu.au for details.			
PROFESSIONAL RECOGNITION Please note you will not be eligible for VIT registration upon completion of this degree. If you are wanting to become a registered teacher with VIT you would need to transfer to one of the other Bachelor of Education degrees.			

Bachelor of Outdoor and Environmental Education

You love the outdoors and want to share this passion with other people. You want to lead, inspire and teach others. You want a degree that will give you the opportunity to explore alpine areas, rock climb, paddle and bushwalk. When you graduate, you want options to work in different areas across your career. Your subjects are a blend of hands-on and theoretical work, and include outdoor leadership, community and bush environments, and coastal environments. Your studies will focus on blending hands-on experiences, such as camps, and fieldwork, with the theory dedicated to making you a leader, teacher and developing your people skills in a variety of settings. Your future may see you teaching in Australia or overseas, or running outdoor education centres. Perhaps you'll work in resorts, councils or community organisations. And maybe you'll start your own ecotourism company.

LOCATION Mt Helen (Ballarat), Churchill (Gippsland)		INTAKE February, July
DURATION 3 years	CRICOS 085612B	ANNUAL FEE \$28,500
ENTRY REQUIREMENTS Successful completion of Australian Year 12, or overseas equivalent. Overall Academic IELTS score of 6.0, with no band score less than 6.0, or equivalent.		
PROFESSIONAL RECOGNITION Outdoors Victoria (OV), Outdoor Education Australia (OEA) Please note you will not be eligible for VIT registration upon completion of this degree. If you are wanting to become a registered teacher with VIT you would need to transfer to one of the other Bachelor of Education degrees.		

Bachelor of Secondary Education

Become an engaging, motivating and innovative secondary school teacher. You will gain a deep knowledge of two specialist teaching areas combined with 80 days of teaching placement. You will graduate with the confidence to connect with young people and teach from Year 7 through to Year 12. You will have the option of two streams to complete your degree – you can choose a major and minor or a double major across a variety of areas including Humanities, Art, English, Science, History, Psychology, Mathematics, Information Technology and Media Studies. You'll be ready to teach by undertaking a minimum of 80 days of supervised teaching placement with our partner schools throughout the course. Teachers are in high demand and you can teach across Australia in remote communities, thriving regional centres or in our capital cities.

LOCATION Mt Helen (Ballarat), Berwick (Melbourne), Churchill (Gippsland)			
INTAKE February	DURATION 4 years	CRICOS 106091M	ANNUAL FEE \$25,000
ENTRY REQUIREMENTS Successful completion of Australian Year 12 with a final year Mathematics course, or overseas equivalent. Overall Academic IELTS score of 7.0, with no band score less than 7.5 for Speaking and Listening and 6.5 for Reading and Writing, or equivalent.			
EXTRA REQUIREMENTS Students must prove they meet the English language requirement as determined by the Victorian Institute of Teaching (VIT) to be eligible for registration.			
PROFESSIONAL RECOGNITION VIT (Victorian Institute of Teaching)			

“On my second teaching placement at Mt Clear College in Ballarat, my mentor retired and the school offered me a job. When I started, I already felt so familiar with the school environment and the up-to-date practical theories. Since then, so many opportunities have opened up for me and my students. I organised a China visit for my Year 9 students, and we took a koala and panda toy on the trip.”

Jun Wang, China
Master of Teaching (Secondary) graduate

Bachelor of Secondary Education (Health and Physical Education Teaching)

Our Bachelor of Secondary Education (Health and Physical Education Teaching) prepares you to teach from year 7 through to VCE. You will have the opportunity to make a difference by giving young people the knowledge and tools to lead healthy and active lives. Areas of study include exercise physiology, biomechanics, motor development, learning fundamentals, foundations of health and physical education, health and human development, nutrition, physical activity, creative movement, applied sports science, contemporary curriculum design, pedagogy and assessment for teaching and learning in health and physical education. In addition to specialising in health and PE education, you will choose a second teaching method: such as including Humanities, Art, English, Science, History, Psychology, Mathematics, Information Technology and Media Studies. You'll be ready to teach by undertaking a minimum of 80 days of supervised teaching placement with our partner schools throughout the course. Teachers are in high demand and you can teach across Australia in remote communities, thriving regional centres or in our capital cities.

LOCATION Mt Helen (Ballarat), Berwick (Melbourne), Churchill (Gippsland)			
INTAKE February	DURATION 4 years	CRICOS 106092K	ANNUAL FEE \$25,000
ENTRY REQUIREMENTS Successful completion of Australian Year 12 with final-year mathematics courses, or overseas equivalent. Overall Academic IELTS score of 7.0, with no band score less than 7.5 for Speaking and Listening and 6.5 for Reading and Writing, or equivalent.			
EXTRA REQUIREMENTS Visit study.federation.edu.au for details.			
PROFESSIONAL RECOGNITION VIT (Victorian Institute of Teaching)			

Bachelor of Sport, Physical and Outdoor Education

Share your passion for being active, sport and the outdoors with others. During this degree, you'll learn leadership, teaching and people skills and put these into practice in a variety of settings. Your subjects are a blend of hands-on and theoretical work, and include outdoor leadership, fundamental movement, exercise physiology and fitness, swimming and water safety, biomechanics, outdoor living and travel skills and human development and nutrition. You will also complete 150 days of placement during the degree, providing a strong foundation for a rewarding career in the sport, recreation and outdoor education industries. This degree also allows you to pathway in your second year of study to a Bachelor of Secondary Education, where you can progress your career into the teaching field.

LOCATION Mt Helen (Ballarat), Berwick (Melbourne), Churchill (Gippsland)			
INTAKE February, July	DURATION 3 years	CRICOS 106308K	ANNUAL FEE \$25,000
ENTRY REQUIREMENTS Successful completion of Australian Year 12 with final-year mathematics courses, or overseas equivalent. Overall Academic IELTS score of 6.0, with no band score less than 6.0, or equivalent.			
PROFESSIONAL RECOGNITION Australian Council for Health, Physical Education and Recreation (ACHPER) Please note you will not be eligible for VIT registration upon completion of this degree. If you are wanting to become a registered teacher with VIT you would need to transfer to one of the other Bachelor of Education degrees.			

Graduate Certificate in Education Studies

The Graduate Certificate in Education Studies focuses on subjects that explore teaching and learning in local and global contexts, the purpose of education, feedback, assessment and reporting, and the examination of how children and young people's learning can be supported in diverse settings.

LOCATION Mt Helen (Ballarat)		INTAKE February
DURATION 0.5 year	CRICOS 0100899	ANNUAL FEE \$13,400
ENTRY REQUIREMENTS Successful completion of a Bachelor of Education, Bachelor of Education Studies or a non-cognate Bachelor Degree. Overall Academic IELTS score of 6.5, with no band score less than 6.0, or equivalent.		

Graduate Diploma of Education Studies

The Graduate Diploma of Education Studies focuses on subjects that explore teaching and learning in local and global contexts, the purpose of education, feedback, assessment and reporting, and the examination of how children and young people's learning can be supported in diverse learning settings. Students further examine leadership and policy in organisational contexts, and/or critical communities of learning, inquiry and leadership and/or diversity, inclusion and social justice.

LOCATION Mt Helen (Ballarat)		INTAKE February
DURATION 1 year	CRICOS 0100900	ANNUAL FEE \$26,800
ENTRY REQUIREMENTS Successful completion of a Bachelor of Education, Bachelor of Education Studies or a non-cognate Bachelor Degree. Overall Academic IELTS score of 6.5, with no band score less than 6.0, or equivalent.		

Master of Teaching (Early Childhood)

Build on your undergraduate degree to become an Early Childhood teacher. Maybe it is time for a career change or studying for your degree has shown you that teaching is where you belong. You will graduate from this degree with the confidence and skills to teach in Pre-Schools throughout Australia and overseas. This is a hands-on course that will get you into the classroom for a minimum of 60 days where you can put into practice what you have learnt.

LOCATION Mt Helen (Ballarat)		INTAKE February, July
DURATION 2 years	CRICOS 0100320	ANNUAL FEE \$26,800
ENTRY REQUIREMENTS Successful completion of a 3 year Bachelor degree, or equivalent. Overall Academic IELTS score of 7.0, with no band score less than 7.5 for Speaking and Listening and 6.5 for Reading and Writing, or equivalent.		
EXTRA REQUIREMENTS Visit study.federation.edu.au for details. Students must prove that they meet the English language requirement as determined by the Victorian Institute of Teaching (VIT) and/or ACECQA to be eligible for teacher registration.		
PROFESSIONAL RECOGNITION Australian Children's Education and Care Quality Authority (ACECQA)		

Master of Teaching (Primary)

This postgraduate course will help you take your skills from your undergraduate degree to become a teacher. You'll graduate from this degree with the confidence and skills to teach in primary schools across Australia and overseas. It's a hands-on course that gets you out into the classroom for a minimum of 60 days, where you can put what you've learnt into practice. You'll discover how children learn and how you can help to develop and support their learning. You'll look at examples from around the world, and learn how to best work with children from diverse backgrounds.

LOCATION Mt Helen (Ballarat)		INTAKE February
DURATION 2 years	CRICOS 097877M	ANNUAL FEE \$26,800
ENTRY REQUIREMENTS Successful completion of a 3 year Bachelor degree, or equivalent. Overall Academic IELTS score of 7.0, with no band score less than 7.5 for Speaking and Listening and 6.5 for Reading and Writing, or equivalent.		
EXTRA REQUIREMENTS Visit study.federation.edu.au for details. Students must prove that they meet the English language requirement as determined by the Victorian Institute of Teaching (VIT) to be eligible for teacher registration.		
PROFESSIONAL RECOGNITION Victorian Institute of Teaching (VIT)		

Master of Teaching (Secondary)

Develop the skills, understandings and dispositions for effective teaching. Coursework is linked to the Australian Graduate Teaching Standards and provides you with regular classroom observations, practitioner inquiries linked to personal goals, regular opportunities to develop core teaching practices, and the support of professional learning communities. You will also participate in 60 days of placement throughout the degree. Our course is small and people-centred, providing the ideal learning environment to become a teacher equipped to make a difference.

LOCATION Mt Helen (Ballarat)		INTAKE February
DURATION 2 years	CRICOS 097878K	ANNUAL FEE \$26,800
ENTRY REQUIREMENTS Successful completion of a 3 year Bachelor degree, or equivalent. Overall Academic IELTS score of 7.0, with no band score less than 7.5 for Speaking and Listening and 6.5 for Reading and Writing, or equivalent.		
EXTRA REQUIREMENTS Visit study.federation.edu.au for details. Students must prove that they meet the English language requirement as determined by the Victorian Institute of Teaching (VIT) to be eligible for teacher registration.		
PROFESSIONAL RECOGNITION Victorian Institute of Teaching (VIT)		

"Federation University provides excellent resources, opportunities and practical strategies to help me build confidence as a teacher. I've had placements or observation classes at different schools, and I've just completed a 20-day placement at Phoenix Community College, which was an amazing experience. The teachers were all so welcoming and helpful, and they gave me great inspiration about how to make classes engaging."

Tran My Tran, Vietnam
Master of Teaching (Secondary)

Engineering

Build a better future

Wind turbines that reduce global warming. Robots that rove the surface of Mars. Underwater tunnels that connect different countries. Engineers build extraordinary things, and with a qualification from Federation University, you can too.

With so many areas of engineering to pursue, our undergraduate degrees focus on flexibility. In your first year, you'll gain a solid foundation in our engineering courses, and from second year, progress to a specialist stream in Civil, Electrical and Information, Mechanical or Mining Engineering. You'll have the opportunity to gain practical experience through industry placements too, giving you real-world experiences so you'll be work-ready when you graduate.

Industry accreditation

Accredited by Engineers Australia, the trusted accreditation authority for engineering education in Australia and overseas, our degrees are recognised internationally for producing graduates who are equipped with relevant and up-to-date skills.

STUDY TYPE		LOCATION	DURATION (YEARS)	FEES (ANNUALLY)
ENGINEERING				
PC	Diploma of Engineering (Higher Education)	★ Ballarat	2 S	\$29,600
U	Bachelor of Engineering (Civil) (Honours)	★ Ballarat ★ Gippsland	4	\$29,600
U	Bachelor of Engineering (Electrical and Information Engineering) (Honours)	★ Ballarat ★ Gippsland	4	\$29,600
U	Bachelor of Engineering (Mechanical) (Honours)	★ Ballarat	4	\$29,600
U	Bachelor of Engineering (Mining) (Honours)	★ Ballarat	4	\$29,600
P	Graduate Certificate in Community Energy and Micro-Grid	★ Ballarat	0.5	\$14,800 C
P	Graduate Certificate in Maintenance Management	★ Online	1	\$14,800 C
P	Graduate Certificate in Reliability Engineering	★ Online	1	\$14,800 C
P	Graduate Diploma of Engineering Maintenance Management	★ Online	2 PT	\$26,900
P	Graduate Diploma of Mining	★ Ballarat ★ Online	2	\$22,200
P	Master of Engineering Project Management	★ Ballarat	3	\$29,600
P	Master of Engineering Technology (Civil Engineering)	★ Ballarat	2	\$29,600
P	Master of Engineering Technology (Mechanical Engineering)	★ Ballarat	2	\$29,600
P	Master of Engineering Technology (Mechatronics and Industrial Automation)	★ Online	2	\$29,600
P	Master of Engineering Technology (Mining Engineering)	★ Ballarat ★ Online	2	\$29,600
P	Master of Engineering Technology (Renewable Energy and Electrical Power Systems)	★ Ballarat	2	\$29,600
P	Master of Maintenance and Reliability Engineering	★ Online	2	\$29,600
PC Pathway course U Undergraduate bachelor degree P Postgraduate studies S Semesters PT Part-time study C Per certificate ★ Online learning is only for students not on a TU 500 visa				



“During the summer vacation, I was involved in a placement at an engineering construction company for 12 weeks which I enjoyed very much.

In my final year, I was lucky enough to be a sessional tutor for structural designing. So I was able to work with my fellow lecturers as a tutor and that experience led me to become a graduate structural engineer at Cardno TGM in Ballarat. The company specialises in the approval, design and completion of urban development, building and infrastructure projects.”

Shalinka Fernando, Sri Lanka
Bachelor of Engineering Technology (Civil) (Honours) graduate

Diploma of Engineering (Higher Education)

A pathway through to the Bachelor of Engineering, the Diploma of Engineering (Higher Education) is a globally recognised, hands on and practical program where students develop the specialist knowledge and skills they'll need to solve problems faced by the engineering industry. Graduates will hone their mathematic and science abilities in a supportive and helpful environment, before being spring boarded into the second year of the undergraduate program.

LOCATION Mt Helen (Ballarat)		INTAKE February, July, November
DURATION 2 Semesters	CRICOS 109400A	ANNUAL FEE \$29,600
ENTRY REQUIREMENTS Year 12 entry: Successful completion of a Victorian Certificate of Education (VCE) or it's equivalent, such as an interstate or International Year 12 qualification. Provision may exist through other pathways including mature age entry or recognition of prior learning. Overall Academic IELTS score of 5.5, with no band score less than 5.0, or equivalent.		

Bachelor of Engineering (Civil) (Honours)

Learn to prevent flooding, design irrigation systems and build multi-storied buildings whilst acquiring problem-solving and analytical skills. Choose your specialisation in structural engineering, geotechnical engineering, transport engineering, water engineering or infrastructure management. Throughout the degree you will participate in 480 hours of placement across 12 weeks.

LOCATION Mt Helen (Ballarat), Churchill (Gippsland)		INTAKE February, July
DURATION 4 years	CRICOS 085617G	ANNUAL FEE \$29,600
ENTRY REQUIREMENTS Successful completion of Australian Year 12 with one final year course in Mathematics (any), or overseas equivalent. Overall Academic IELTS score of 6.0, with no band score less than 6.0, or equivalent.		
PROFESSIONAL RECOGNITION Engineers Australia		

Bachelor of Engineering (Electrical and Information Engineering) (Honours)

Develop in-depth knowledge and skills across electrical and information engineering. The course covers key areas of the electrical, electronic and computer domains through programming, data science, data analytics, cybersecurity of physical systems, imaging, artificial intelligence and communication engineering. Students will access sophisticated electrical engineering software (ETAP), a comprehensive analysis platform for design, simulation, operation and automation. Throughout the degree you will participate in 480 hours of placement across 12 weeks.

LOCATION Mt Helen (Ballarat), Churchill (Gippsland)		INTAKE February, July
DURATION 4 years	CRICOS 0100639	ANNUAL FEE \$29,600
ENTRY REQUIREMENTS Successful completion of Australian Year 12 with one final year course in Mathematics (any), or overseas equivalent. Overall Academic IELTS score of 6.0, with no band score less than 6.0, or equivalent.		
PROFESSIONAL RECOGNITION Engineers Australia		

Bachelor of Engineering (Mechanical) (Honours)

Become a professional engineer who is an expert in planning, design and management. Invent new products, design innovative machines and change the way humans interact with mechanics. Learn about electric circuits and machines, thermodynamics and industrial robots. In your final year, pursue your interest by choosing a research project to advance your skills and knowledge. Throughout the degree you will participate in 480 hours of placement across 12 weeks.

LOCATION Mt Helen (Ballarat)		INTAKE February, July
DURATION 4 years	CRICOS 085618G	ANNUAL FEE \$29,600
ENTRY REQUIREMENTS Successful completion of Australian Year 12 with one final year course in Mathematics (any), or overseas equivalent. Overall Academic IELTS score of 6.0, with no band score less than 6.0, or equivalent.		
PROFESSIONAL RECOGNITION Engineers Australia		

Bachelor of Engineering (Mining) (Honours)

Mine in a sustainable and safe way and learn the social and political aspects that will impact your career. Study mineral deposit evaluation and processing, underground production systems, mine power and services, surface mining operations and mine environment and safety. Launch your career in design, planning, operations or management, in government and private organisations, mining companies and consulting firms. Throughout the degree you will participate in 480 hours of placement across 12 weeks.

LOCATION Mt Helen (Ballarat), Online/Off-Campus		INTAKE February, July
DURATION 4 years	CRICOS 085619F	ANNUAL FEE \$29,600
ENTRY REQUIREMENTS Successful completion of Australian Year 12 with one final year course in Mathematics (any), or overseas equivalent. Overall Academic IELTS score of 6.0, with no band score less than 6.0, or equivalent.		
PROFESSIONAL RECOGNITION Engineers Australia		

Graduate Certificate in Community Energy and Micro-Grid

Learn about the complex nature of renewable energy sources, energy storage, community microgrids, emerging technologies, and energy project management. This degree will equip you with the knowledge and skills to progress your career in the energy sector.

LOCATION Mt Helen (Ballarat), Online/Off-Campus		INTAKE July
DURATION 0.5 years	CRICOS 104935K	ANNUAL FEE \$14,800 per certificate
ENTRY REQUIREMENTS A recognised three year degree or diploma in science, engineering or equivalent in relevant specialisation, awarded by an Australian university, or a recognised overseas equivalent. Overall Academic IELTS score of 6.0, with no band score less than 6.0, or equivalent.		

Courses, costs and locations are subject to variation.
For the most up to date information, visit study.federation.edu.au

Graduate Certificate in Maintenance Management

Gain knowledge in manufacturing processes, transport, power generation and industrial, commercial and civic building operations. Embrace leadership and management techniques, maintenance strategies and asset operations optimisation.

LOCATION Online/Off-Campus		INTAKE February, July
DURATION 1 year	CRICOS N/A	ANNUAL FEE \$14,800 per certificate
ENTRY REQUIREMENTS A three-year degree in engineering, science, applied science or appropriate degree program or at least three years of high-level experience and successful completion of two subjects on a non-award basis selected from the Master of Maintenance and Reliability Engineering course offerings. Overall Academic IELTS score of 6.0, with no band score less than 6.0, or equivalent.		

Graduate Certificate in Reliability Engineering

Designed primarily for the graduate engineer and delivered online, this mathematically based course covers technical aspects of engineering, focusing on reliability and availability of systems. You will study quality control, design and data analysis, as well as designing reliability into safety critical systems.

LOCATION Online/Off-Campus		INTAKE February, July
DURATION 1 year	CRICOS N/A	ANNUAL FEE \$14,800 per certificate
ENTRY REQUIREMENTS A three-year degree in engineering, science, applied science or appropriate degree program or at least three years of high-level experience and successful completion of two subjects on a non-award basis selected from the Master of Maintenance and Reliability Engineering course offerings. Overall Academic IELTS score of 6.0, with no band score less than 6.0, or equivalent.		

Graduate Diploma of Engineering Maintenance Management

Gain knowledge in manufacturing processes, transport, power generation and industrial, commercial and civic building operations. Embrace leadership and management techniques, maintenance strategies and asset operations optimisation.

LOCATION Online/Off-Campus		INTAKE February, July
DURATION 2 years, part time	CRICOS N/A	ANNUAL FEE \$26,900
ENTRY REQUIREMENTS A recognised degree in Engineering or a related area, together with at least two years of work experience, or completion of the Graduate Certificate in Maintenance Management or the Graduate Certificate in Reliability Engineering. Overall Academic IELTS score of 6.0, with no band score less than 6.0, or equivalent.		
PROFESSIONAL RECOGNITION Engineers Australia		

Graduate Diploma of Mining

This course was created with the working engineer in mind. Expected to appeal particularly to civil, mechanical, electrical, chemical and construction, geologists, metallurgists, surveyors and other professionals. Study areas include engineering physics, modelling and change, mine surveying, production drilling and blasting, tunnelling and mine development.

LOCATION Mt Helen (Ballarat), Online/Off-Campus		INTAKE February, July
DURATION 2 years	CRICOS 085622M	ANNUAL FEE \$22,200
ENTRY REQUIREMENTS Successful completion of a recognised 3-year Australian bachelor degree or overseas equivalent. Overall Academic IELTS score of 6.0, with no band score less than 6.0, or equivalent.		
PROFESSIONAL RECOGNITION Engineers Australia.		

Master of Engineering Project Management

Gain knowledge and skills in project execution and resource planning. Learn more about contracts and costing, business analysis and decision making, human and financial resources, risk and research methodology. You will also undertake independent research in your final year.

LOCATION Mt Helen (Ballarat)		INTAKE February, July
DURATION 2 years	CRICOS 0100640	ANNUAL FEE \$29,600
ENTRY REQUIREMENTS Successful completion of a recognised 3 or 4 year Engineering bachelor degree in the relevant specialisation (major field) with credit average, awarded by an Australian university, or a recognised overseas equivalent. Overall Academic IELTS score of 6.0, with no band score less than 6.0, or equivalent.		
PROFESSIONAL RECOGNITION Engineers Australia.		

Master of Engineering Technology (Civil Engineering)

Progress your career with studies in civil engineering. Civil Engineers are responsible for the design and construction of all types of structures including single to multi-storied buildings, roads, dams, bridges, pipelines, towers, harbours, airports and railways. Civil engineers also plan, design and test the infrastructure associated with transport, gas supply, water supply and sewerage systems. This professionally orientated course provides students with the knowledge and skills that are necessary to obtain employment as a professional engineer as well as gain membership to Engineers Australia.

LOCATION Mt Helen (Ballarat)		INTAKE February, July
DURATION 2 years	CRICOS 079924C	ANNUAL FEE \$29,600
ENTRY REQUIREMENTS Successful completion of a recognised 3 or 4 year Engineering bachelor degree in the relevant specialisation (major field) with credit average, awarded by an Australian university, or a recognised overseas equivalent. Overall Academic IELTS score of 6.0, with no band score less than 6.0, or equivalent.		
PROFESSIONAL RECOGNITION Engineers Australia.		

Master of Engineering Technology (Mechanical Engineering)

Progress your career with advanced studies in mechanical engineering. This professionally orientated course provides students with the knowledge and skills that are necessary to obtain employment as a professional engineer as well as gain membership to Engineers Australia. You will also undertake independent research in your final year.

LOCATION Mt Helen (Ballarat)		INTAKE February, July
DURATION 2 years	CRICOS 079927M	ANNUAL FEE \$29,600
ENTRY REQUIREMENTS Successful completion of a recognised 3 or 4 year Engineering bachelor degree in the relevant specialisation (major field) with credit average, awarded by an Australian university, or a recognised overseas equivalent. Overall Academic IELTS score of 6.0, with no band score less than 6.0, or equivalent.		
PROFESSIONAL RECOGNITION Engineers Australia.		

Master of Engineering Technology (Mechatronics and Industrial Automation)

This course provides a balance in knowledge and skills between the three key areas of mechanical, electrical, and computer engineering, with a strong focus on project-based and multidisciplinary learning.

LOCATION Churchill (Gippsland)		INTAKE February, July
DURATION 2 years	CRICOS 106472J	ANNUAL FEE \$29,600
ENTRY REQUIREMENTS Successful completion of a recognised 3 or 4 year Engineering bachelor degree in the relevant specialisation (major field) with credit average, awarded by an Australian university, or a recognised overseas equivalent. Overall Academic IELTS score of 6.0, with no band score less than 6.0, or equivalent.		
PROFESSIONAL RECOGNITION Engineers Australia.		

Master of Engineering Technology (Mining Engineering)

Progress your career with advanced studies in mining engineering. This professionally orientated course provides students with the knowledge and skills that are necessary to obtain employment as a professional engineer as well as gain membership to Engineers Australia. You will also undertake independent research in your final year.

LOCATION Mt Helen (Ballarat), Online/Off-Campus		INTAKE February, July
DURATION 2 years	CRICOS 079928K	ANNUAL FEE \$29,600
ENTRY REQUIREMENTS Successful completion of a recognised 3 or 4 year Engineering bachelor degree in the relevant specialisation (major field) with credit average, awarded by an Australian university, or a recognised overseas equivalent. Overall Academic IELTS score of 6.0, with no band score less than 6.0, or equivalent.		
PROFESSIONAL RECOGNITION Engineers Australia.		

Master of Engineering Technology (Renewable Energy and Electrical Power Systems)

This course covers key areas of electrical circuits, signals and systems, energy conversion, power electronics, power systems, electrical power distribution and protection systems, control systems and renewable energy. Learn more about sensors, artificial perception, and the Internet of Things (IoT) in smart energy systems. In your final year, undertake your own independent research project, relevant to your area of specialisation.

LOCATION Mt Helen (Ballarat)		INTAKE February, July
DURATION 2 years	CRICOS 0100637	ANNUAL FEE \$29,600
ENTRY REQUIREMENTS Successful completion of a recognised 3 or 4 year Engineering bachelor degree in the relevant specialisation (major field) with credit average, awarded by an Australian university, or a recognised overseas equivalent. Overall Academic IELTS score of 6.0, with no band score less than 6.0, or equivalent.		
PROFESSIONAL RECOGNITION Engineers Australia.		

Master of Maintenance and Reliability Engineering

Progress your career within the engineering industry and learn about terotechnology and lifecycle costs, risk engineering and reliability applications.

LOCATION Online/Off-campus		INTAKE February, July
DURATION 2 years	CRICOS N/A	ANNUAL FEE \$29,600
ENTRY REQUIREMENTS Applicants should have a Bachelor of Engineering degree with honours, or have completed the Graduate Certificate in Engineering Maintenance Management with an average result of 65%. In certain circumstances, applicants with a Bachelor of Engineering pass degree or other appropriate degree together with honours-equivalent work experience may be admitted. Overall Academic IELTS score of 6.0, with no band score less than 6.0, or equivalent.		
PROFESSIONAL RECOGNITION Engineers Australia.		

Health

Make a real difference

Few careers are as rewarding as being a nurse or other health professional. Working in an evolving health sector, you'll be helping improve lives in the most fundamental ways.

To prepare you as much as possible for working out in the field, we take a hands-on approach. Combining real-world experience with online learning, we equip you with the skills and knowledge needed to provide the highest quality of care.

Specialised facilities

Our Clinical Simulation Precincts provide state-of-the-art facilities that enable you to apply and develop your practical clinical skills. The purpose-built clinical units give you the opportunity to undergo simulated learning based on real-life clinical scenarios, with the capacity to record your involvement for future reflection and critical analysis. Our High Fidelity Units enable controlled simulation of high level complex scenarios requiring various levels of critical care, while our Simulated Home Environment Learning Space allows you to imagine you're treating a patient in the comfort of their own home.



"The Bachelor of Nursing was fantastic. The lecturers were so supportive and the facilities on campus are excellent, just like being in a hospital. I had some wonderful experiences on my placements, working in major hospitals and small regional clinics, giving me a great range of opportunities to increase my knowledge. I'm really happy that I chose Federation, and I'm excited about my nursing career and all the opportunities that are now available."

Jing Xiang, China
Bachelor of Nursing graduate 2019
Registered Nurse, Ballarat Health Services

Bachelor of Nursing

Learn to deliver the highest quality care that is evidence based to improve your patients' outcomes. Subjects include working with diverse communities, mental health, medical and surgical nursing and palliative care. You may choose to work in emergency illness, mental health, long-term care, intercultural health or population health. As part of your degree, you will complete a minimum of 800 hours of clinical placement. These placements take place in a variety of healthcare settings.

LOCATION Mt Helen (Ballarat), Berwick (Melbourne), Churchill (Gippsland)		INTAKE February
DURATION 3 years	CRICOS 088144A	ANNUAL FEE \$31,400
ENTRY REQUIREMENTS Successful Completion of Australian Year 12 or overseas equivalent with one final year course in either Health and Human Development, Biology, Chemistry or Physics. Overall Academic IELTS score of 7.0, with no band score less than 7.0, or equivalent.		
EXTRA REQUIREMENTS Working with children check; Police Record Check; Evidence of current immunisation status. Students must purchase a uniform and nursing kit; available on campus; in the first semester of study. Please note: meeting minimum requirements does not guarantee entry as places are limited. Towards the end of your degree you may apply for professional recognition to work as a nurse in Australia. You must prove you meet the English language skills as determined by the NMBA.		
PROFESSIONAL RECOGNITION Australian Nursing and Midwifery Accreditation Council (ANMAC), Australian Health Practitioner Registration Authority (AHPRA), Nursing and Midwifery Board of Australia (NMBA).		

STUDY TYPE		LOCATION	DURATION (YEARS)	FEES (ANNUALLY)
HEALTH				
U	Bachelor of Nursing	★ Ballarat ★ Berwick ★ Gippsland	3	\$31,400
P	Graduate Certificate in Health (Health Services Management)	★ Online	0.5	\$11,500 C
P	Graduate Certificate in Public Health	★ Ballarat ★ Berwick	0.5	\$11,500 C
P	Graduate Diploma of Public Health	★ Ballarat ★ Berwick ★ Online	1	\$23,000
P	Master of Health (Health Leadership)	★ Online	2	\$23,000
P	Master of Health (Health Services Management)	★ Online	2	\$23,000
P	Master of Health (Research Practice)	★ Online	2	\$23,000
P	Master of Health (Workplace Health and Safety)	★ Online	2	\$23,000
P	Master of Public Health	★ Ballarat ★ Berwick ★ Online	2	\$23,000

U Undergraduate bachelor degree P Postgraduate studies C Per certificate ★ Online learning is only for students not on a TU 500 visa



Graduate Certificate in Health (Health Services Management)

With a focus on safety and quality, learn how policy, leadership and strategic management each play a central role. Engage with contemporary global debates and developments in evidence-based leadership, and receive support to develop an understanding and expertise in your own specific area of professional interest. Successful completion will enable you to drive change and innovation and provide you with advanced skills and knowledge for application within a health service context, leading to career progression.

LOCATION Online/Off-campus		INTAKE February, July
DURATION 0.5 years	CRICOS N/A	ANNUAL FEE \$11,500 per certificate
ENTRY REQUIREMENTS Successful completion of a three year (minimum) Bachelor level qualification in a related health cognate discipline area. Overall Academic IELTS score of 7.0, with no band score less than 6.5, or equivalent.		

Graduate Certificate in Public Health

With a strong emphasis on research, the Graduate Certificate in Public Health provides professionals from multidisciplinary backgrounds with enhanced skills to pursue a career in public health. Gain the knowledge and skills in relation to public health principles, values, ethics, research and practice for improving population health status locally and internationally.

LOCATION Mt Helen (Ballarat), Berwick (Melbourne), Churchill (Gippsland)		INTAKE February, July
DURATION 0.5 years	CRICOS 102484D	ANNUAL FEE \$11,500 per certificate
ENTRY REQUIREMENTS Successful completion of a three year (minimum) Bachelor level qualification or equivalent prior learning developed through relevant work experience or professional accreditation. Overall Academic IELTS score of 6.5, with no band score less than 6.0, or equivalent.		

Graduate Diploma of Public Health

With a strong emphasis on research, the Graduate Diploma in Public Health provides professionals from multidisciplinary backgrounds with enhanced skills to pursue a career in public health. Gain the knowledge and skills in relation to public health principles, values, ethics, research and practice for improving population health status locally and internationally.

LOCATION Mt Helen (Ballarat), Berwick (Melbourne), Online/Off-campus		INTAKE February, July
DURATION 1 year	CRICOS 102483E	ANNUAL FEE \$23,000
ENTRY REQUIREMENTS Successful completion of a three year (minimum) Bachelor level qualification (or equivalent). Overall Academic IELTS score of 6.5, with no band score less than 6.0, or equivalent.		

Master of Health (Health Leadership)

The Master of Health (Health Leadership) provides working professionals with a convenient way to engage with contemporary global debates and developments in their professional area of interest while at the same time upgrading their qualifications. You'll develop knowledge and skills that can be applied directly into a health practice area.

LOCATION Online/Off-campus		INTAKE February, July
DURATION 2 years	CRICOS 097976G	ANNUAL FEE \$23,000
ENTRY REQUIREMENTS Successful completion of a recognised 3-year Australian bachelor degree in a related health cognate discipline area, or overseas equivalent. Overall Academic IELTS score of 7.0, with no band score less than 6.5, or equivalent.		

Master of Health (Health Services Management)

With a focus on safety and quality, learn how policy, leadership and strategic management each play a central role. Engage with contemporary global debates and developments in evidence-based leadership, and receive support to develop an understanding and expertise in your own specific area of professional interest. Successful completion will enable you to drive change and innovation and provide you with advanced skills and knowledge for application within a health service context, leading to career progression.

LOCATION Online/Off-campus		INTAKE February, July
DURATION 2 years	CRICOS N/A	ANNUAL FEE \$23,000
ENTRY REQUIREMENTS Successful completion of a recognised 3-year Australian bachelor degree in a related health cognate discipline area, or overseas equivalent. Overall Academic IELTS score of 7.0, with no band score less than 6.5, or equivalent.		

Master of Health (Research Practice)

The Master of Health (Research Practice) provides working professionals with a convenient way to engage with contemporary global debates and developments in your professional area of interest while at the same time upgrading your qualifications. You'll develop knowledge and skills that support the discovery and translation of evidence based research into practice.

LOCATION Online/Off-campus		INTAKE February, July
DURATION 2 years	CRICOS 097977G	ANNUAL FEE \$23,000
ENTRY REQUIREMENTS Successful completion of a recognised 3-year Australian bachelor degree or overseas equivalent. Overall Academic IELTS score of 7.0, with no band score less than 6.5, or equivalent.		

Master of Health (Workplace Health and Safety)

This program aims to assist Workplace Health and Safety (WH&S) professionals further develop, implement and evaluate WH&S interventions by utilising strong evidence based practice.

LOCATION Online/Off-campus		INTAKE February, July
DURATION 2 years	CRICOS N/A	ANNUAL FEE \$23,000
ENTRY REQUIREMENTS Successful completion of a recognised 3-year (minimum) Australian bachelor level qualification in a related health cognate discipline area, or overseas equivalent. Overall Academic IELTS score of 7.0, with no band score less than 6.5, or equivalent.		
PROFESSIONAL RECOGNITION Safety Institute of Australia (SIA)		

Master of Public Health

With a strong emphasis on research, the Master of Public Health program provides professionals from multidisciplinary backgrounds with enhanced skills to pursue a career in public health. Gain the knowledge and skills in relation to public health principles, values, ethics, research and practice for improving population health status locally and internationally.

LOCATION Mt Helen (Ballarat), Berwick (Melbourne), Online/Off-campus		INTAKE February, July
DURATION 2 years	CRICOS 102482F	ANNUAL FEE \$23,000
ENTRY REQUIREMENTS Successful completion of a 3-year (minimum) Bachelor level qualification, or overseas equivalent. An applicant may have also completed another university qualification and have appropriate industry experience. Overall Academic IELTS score of 6.5, with no band score less than 6.0, or equivalent.		
FURTHER INFORMATION You may exit the program at 12 months and receive a Graduate Diploma of Public Health (CRICOS code 102483E) following the completion of 120 credit points or exit the program at 6 months and receive a Graduate Certificate in Public Health (CRICOS code 102484D) following the completion of 60 credit points.		



Humanities, Social Sciences, Criminology and Social Work

Improve the way we live

What makes us human? Why do we behave the way we do? How can we use what we learn to tackle pressing issues, help others lead better lives, or change the way we engage with each other?

The arts, humanities and social sciences ask the big questions, diving deep into the contours of human cultures and societies, both past and present. And they do so from a wide range of angles – politics, history, sociology, criminology, literature, media, and social welfare (just to name a few).

Through our courses, you'll learn the critical and creative thinking, problem solving, research and analysis, and communication skills employers look for in today's fast-changing world – in a range of careers across a number of industries.



"Federation University has given me support in so many ways to achieve more than I could have ever hoped for. Fed has pushed me to reach my potential by providing me all the necessary tools I needed. During my Work Integrated Learning, I was exposed to many issues and struggles faced by children and teachers and allowed me to be more aware of the culture within Australian schools and the support they need."

Windya Peiris, Sri Lanka
Master of Social Work 2nd Year

STUDY TYPE		LOCATION	DURATION (YEARS)	FEES (ANNUALLY)
HUMANITIES, SOCIAL SCIENCES, CRIMINOLOGY AND SOCIAL WORK				
U	Bachelor of Arts (Humanities) (Honours)	★ Ballarat ★ Gippsland	1	\$22,200
U	Bachelor of Arts (Social Sciences) (Honours)	★ Ballarat ★ Gippsland	1	\$22,200
U	Bachelor of Community and Human Services	★ Ballarat ★ Berwick ★ Gippsland	3	\$24,800
U	Bachelor of Criminal Justice Management	★ Ballarat ★ Berwick ★ Gippsland ★ Online	3	\$24,800
U	Bachelor of Criminology and Criminal Justice	★ Ballarat ★ Berwick ★ Online	3	\$24,800
P	Graduate Certificate in Social and Community Services	★ Ballarat ★ Berwick ★ Online	0.5	\$13,300 C
P	Master of Social Work (Qualifying)	★ Ballarat ★ Berwick	2	\$26,600

U Undergraduate bachelor degree P Postgraduate studies C Per certificate ★ Online learning is only for students not on a TU 500 visa

Bachelor of Arts (Humanities) (Honours)

This fourth-year course often serves as a prelude to a higher degree in research or advanced professional practice in careers that entail complex research work. It will prepare you for professional or research work in the disciplinary field of preference by providing training in theory, methodology and epistemology. This Humanities stream involves study in History, Literature, Writing, Media and Screen Studies, Indigenous Studies and Philosophy.

LOCATION Mt Helen (Ballarat), Churchill (Gippsland)		INTAKE February
DURATION 1 year	CRICOS 097882C	ANNUAL FEE \$22,200
ENTRY REQUIREMENTS Applicants to this program must have completed an Australian undergraduate degree or equivalent with no less than "D" (Distinction) or equivalent in the major area in which applicants have chosen to pursue their Honours studies. Overall Academic IELTS score of 6.0, with no band score less than 6.0, or equivalent.		

Bachelor of Arts (Social Sciences) (Honours)

The Bachelor of Arts (Honours) is a fourth-year program that serves as a prelude to a higher degree in research or to professional practice in a range of careers that entail advanced research work. With half the program dedicated to a thesis-based experience of independent research conducted professionally, the program prepares individuals for professional or research work in the disciplinary field of their preference. It provides training in methodology, research skills and theoretical inquiry. This Social Sciences stream enables students to choose to study Sociology, Criminology and Criminal Justice, Community and Human Services, History or Indigenous Studies.

LOCATION Mt Helen (Ballarat), Churchill (Gippsland)		INTAKE February
DURATION 1 year	CRICOS 097883B	ANNUAL FEE \$22,200
ENTRY REQUIREMENTS Applicants to this program must have completed an Australian undergraduate degree or equivalent with no less than "D" (Distinction) or equivalent in the major area in which applicants have chosen to pursue their Honours studies. Overall Academic IELTS score of 6.0, with no band score less than 6.0, or equivalent.		



Bachelor of Community and Human Services

Provide support and assistance to a range of individuals, families and communities experiencing family violence, poverty, homelessness, mental health or living with a disability. Subjects include 'social policy', 'social issues and personal values' and 'Australian indigenous societies'. Spend time in the industry through 650 placement hours across 18 weeks, putting your skills into practice and experiencing real-life situations. Career opportunities include counselling, social research, youth justice, family and disability support, aged care, community engagement programs and more.

LOCATION Mt Helen (Ballarat), Berwick (Melbourne), Churchill (Gippsland)			
INTAKE February, July	DURATION 3 years	CRICOS 085212G	ANNUAL FEE \$24,800
ENTRY REQUIREMENTS Successful completion of Australian Year 12, or overseas equivalent. Overall Academic IELTS score of 6.5, with no band score less than 6.0, or equivalent.			
PROFESSIONAL RECOGNITION Australian Community Workers Association (ACWA), Community Corrections Services (CCS).			

Bachelor of Criminal Justice Management

Combine your passion for social and criminal justice, with people and project management skills and make a real difference to the people impacted by the criminal justice system. Throughout the degree you will develop skills in management, strategic planning, project management, policy and grant writing in addition to a comprehensive understanding of the criminal justice system. You'll gain real-world experience through our work integrated learning program, completing 200 placement hours in criminal justice programs and agencies

LOCATION Mt Helen (Ballarat), Berwick (Melbourne), Churchill (Gippsland), Online/Off-campus			
INTAKE February, July	DURATION 3 years	CRICOS 107023D	ANNUAL FEE \$24,800
ENTRY REQUIREMENTS Successful completion of Australian Year 12, or overseas equivalent. Overall Academic IELTS score of 6.0, with no band score less than 6.0, or equivalent.			

Bachelor of Criminology and Criminal Justice

Develop your understanding of the explanations of crime and the criminal justice system. Take a critical perspective of the criminal justice system, policies and programs and how they respond to diverse communities. Choose a minor or second major from Community and Human Services, Behavioural Studies (Psychology) and Social Science/Sociology. Throughout the degree you will participate in 200 placement hours across 5 weeks. Prepare for work in state and federal police, in courts and corrections, government departments and for work in community based agencies delivering criminal justice programs

LOCATION Mt Helen (Ballarat), Berwick (Melbourne), Churchill (Gippsland), Online/Off-campus			
INTAKE February, July	DURATION 3 years	CRICOS 0100646	ANNUAL FEE \$24,800
ENTRY REQUIREMENTS Successful completion of Australian Year 12, or overseas equivalent. Overall Academic IELTS score of 6.0, with no band score less than 6.0, or equivalent.			
PROFESSIONAL RECOGNITION Community Corrections Services (CCS)			

"I decided to study social work to not only work with people, but to also understand the socio, economic and political environments. My first placement was in a health service where I was working directly with patients and families. One of the major learning points was working in a multi-disciplinary team of social workers, medical doctors, nurses, physiotherapists and other allied health professionals."

Mohammed Salman, India
Master of Social Work (Qualifying)

Graduate Certificate in Social and Community Services

The Graduate Certificate in Social and Community Services is designed for community and human services professionals looking to advance their careers or those seeking a new career in this growing sector. Many social problems, including poverty, conflict, family violence, growing social and economic disparities in health, education and mental health, are challenges confronting the welfare sector in Australia and around the globe. You will learn theories and practice frameworks that underpin community service work and develop skills to undertake complex case work, group work and social advocacy. This course provides you with the skills to work in a broad range of human services settings including government, non-government welfare organisation and community groups.

LOCATION Mt Helen (Ballarat), Berwick (Melbourne), Online			
INTAKE February, July	DURATION 0.5 year	CRICOS 0102153	ANNUAL FEE \$13,300 (per certificate)

ENTRY REQUIREMENTS
Completed a Bachelor's Degree AQF Level 7 in any discipline. OR Completed a Diploma VET/TAFE or Associate Degree qualification in a related discipline AND a minimum of three years full-time professional experience in the related community and human service fields, such as disability studies, community development, youth work, child protection, family violence, homelessness, housing, humanitarian organisations.
Overall Academic IELTS score of 6.5, with no band score less than 6.5, or equivalent.

PROFESSIONAL RECOGNITION
Community Corrections Services (CCS)

Master of Social Work (Qualifying)

Be an advocate for social justice and human rights. Make a real difference to the lives of people in need. Excel in your career in one of the fastest growing professions. Develop knowledge and expertise of group work, case work, policy and advocacy work, research evaluation and practice. We'll prepare you to work across human and community services including government and non-government organisations, community and health services and more, both nationally and internationally. Gain real world experience through 140 days or 1000 hours of supervised field placements.

LOCATION Mt Helen (Ballarat), Berwick (Melbourne)		
INTAKE February: Berwick (Melbourne), July: Mt Helen (Ballarat)		
DURATION 2 years	CRICOS 085213F	ANNUAL FEE \$26,600

ENTRY REQUIREMENTS
Visit study.federation.edu.au for details.
Successful completion of a relevant* Bachelor degree with a least one year of study or the equivalent of full time studies in social and behavioural sciences. Overall Academic IELTS score of 7.0, with no band score less than 7.0, or equivalent.

EXTRA REQUIREMENTS
Students must be able to prove the English language requirement as determined by the AASW to be eligible for registration.

PROFESSIONAL RECOGNITION
Australian Association of Social Workers(AASW)

*Relevant Bachelor degrees should have at least one year of study in any of the following disciplines: Human welfare studies and services which includes social work, youth work, community work, welfare studies and counselling; Behavioural science which includes psychology or behavioural science; Studies in human society which includes sociology, anthropology, Indigenous studies or gender specific studies; Or other disciplines such as political science, policy studies, family law, justice administration, legal studies, family and consumer studies education with a focus on welfare, public health, health promotion, community health, mental health nursing or community nursing.

Information Technology

Drive change at the cutting-edge

Drive change at the cutting-edge with continuous advances in information technology, the opportunities to progress in areas such as health, transport, finance, entertainment, science, energy, education and manufacturing are virtually limitless.

Thanks to our impressive breadth of content, an IT qualification from Federation University will give you the advanced skills, knowledge and confidence to work across all these sectors.

Study with us and you'll also benefit from our strong connections and industry placement programs – designed to give you the support and experience you need to either get started or rise up in one of the most progressive industries in the world.



Industry accreditation

Our IT degrees and specialisations have been developed alongside trends and changes in the industry and in accordance with the Australian Computer Society's accreditation standards.

Technology Park

We have the largest Technology Parks of any university in Australia at our Mt Helen Campus, hosting more than 64 enterprises, including global companies such as IBM. The new Morwell Innovation Centre near our Gippsland Campus is a hub for business and industry to collaborate. These Tech Parks foster research partnerships and give our students access to internships, industry-based learning programs and graduate employment opportunities.

Professional Practice

International students who achieve highly in the first year of one of our Bachelor of IT degrees can apply to transfer to the Bachelor of IT (Professional Practice) course in their second year. This four year degree includes extensive internships at IBM offices in the Ballarat Technology Park. Successful applicants receive a scholarship over \$42,000 over their final two years and graduate with valuable, hands on industry experience and an established network of industry contacts. Fast track options to complete over three or three and a half years are available.

"My intern role at IBM required me to communicate with a range of different people, which really improved my communication and teamwork skills. It was a fun work environment, and my team were always happy to teach me new things I was finding difficult. I also had the opportunity to use new technologies and develop my technical and problem-solving skills.

The Professional Practice program experience enabled me to meet new people in my field and experience the IT industry and Australian business culture first-hand. With the skills and knowledge I've gained at Federation, I'm definitely in the right place and on the right path to achieve my dreams."

Sofia Mae Sabas, Philippines

Bachelor of Information Technology (Professional Practice) graduate

STUDY TYPE		LOCATION	DURATION (YEARS)	FEES (ANNUALLY)
INFORMATION TECHNOLOGY				
PC	Diploma of Information Technology (Higher Education)	★ Ballarat	2 S	\$25,100
U	Bachelor of Information Technology	★ Ballarat ★ Berwick ★ Gippsland ★ Brisbane ★ Online	3	\$25,100
U	Bachelor of Information Technology (Big Data and Analytics) + Online Delivery	★ Ballarat ★ Berwick	3	\$25,100
U	Bachelor of Information Technology (Business Information Systems)	★ Ballarat ★ Berwick ★ Online	3	\$25,100
U	Bachelor of Information Technology (Networking and Security)	★ Ballarat ★ Brisbane ★ Online	3	\$25,100
U	Bachelor of Information Technology (Professional Practice)	★ Ballarat	4	\$25,100
U	Bachelor of Information Technology (Software Development)	★ Ballarat ★ Online	3	\$25,100
P	Graduate Certificate in Cognitive Enterprise	★ Ballarat	0.5	\$13,450 C
P	Graduate Certificate in Enterprise Systems	★ Ballarat ★ Online	0.5	\$13,450 C
P	Graduate Diploma of Cognitive Enterprise	★ Ballarat	1	\$26,900
P	Master of Applied Cyber Security	★ Ballarat ★ Berwick ★ Brisbane ★ Online	2	\$26,900
P	Master of Cognitive Enterprise	★ Ballarat ★ Online	2	\$26,900
P	Master of Data Science	★ Ballarat ★ Online	2	\$26,900
P	Master of Technology (Enterprise Systems and Business Analytics)	★ Ballarat ★ Brisbane	2	\$26,900
P	Master of Technology (Software Engineering)	★ Ballarat ★ Brisbane	2	\$26,900

PC Pathway course U Undergraduate bachelor degree P Postgraduate studies S Semesters C Per certificate ★ Online learning is only for students not on a TU 500 visa

Courses, costs and locations are subject to variation. For the most up to date information, visit study.federation.edu.au

Diploma of Information Technology (Higher Education)

Within the Diploma of Information Technology (Higher Education), students learn an array of skills in IT with a focus on fundamentals of software development, problem solving, networking and security. The Diploma of Information Technology (Higher Education) can act as a pathway to the Bachelor program, where graduates that successfully complete this program can then commence their second year of a Bachelor of Information Technology, receiving two qualifications in the same amount of time. The Diploma is a globally recognised program, where students will be armed with the knowledge to tackle real world problems encountered within a complex interconnected online environment.

LOCATION Mt Helen (Ballarat)		INTAKE February, July, November
DURATION 2 Semesters	CRICOS 109402K	ANNUAL FEE \$25,100
ENTRY REQUIREMENTS Year 12 entry: Successful completion of a Victorian Certificate of Education (VCE) or it's equivalent, such as an interstate or International Year 12 qualification. Provision may exist through other pathways including mature age entry or recognition of prior learning. Overall Academic IELTS score of 5.5, with no band score less than 5.0, or equivalent.		

Bachelor of Information Technology

Develop strong communication, academic and problem solving skills – critical attributes for success in the IT sector. Learn programming skills to facilitate smooth communication with software developers, explore web design, systems modelling and user experience. Participate in our professional engagement course for the opportunity to network and enhance your knowledge of the IT industry.

LOCATION Mt Helen (Ballarat), Berwick (Melbourne), Churchill (Gippsland), Brisbane (Queensland), Online/Off-campus			
INTAKE February, July, November	DURATION 3 years	CRICOS 074009A	ANNUAL FEE \$25,100
ENTRY REQUIREMENTS Successful completion of Australian Year 12, or overseas equivalent. Overall Academic IELTS score of 6.0, with no band score less than 5.5, or equivalent.			
PROFESSIONAL RECOGNITION Australian Computer Society (ACS)			

Bachelor of Information Technology (Big Data and Analytics)

There is a real need for people who have the skills to identify, interpret and analyse trends from collected data. Study areas such as information and data analysis, allowing you to discover and quantify patterns using statistics, statistical inference, regression analysis and machine learning. Develop technical knowledge on a range of topics including statistics, statistical inference, high performance computing and visualisation.

LOCATION Mt Helen (Ballarat), Berwick (Melbourne), Online		INTAKE February
DURATION 3 years	CRICOS 092056M	ANNUAL FEE \$25,100
ENTRY REQUIREMENTS Successful completion of Australian Year 12, or overseas equivalent. Overall Academic IELTS score of 6.0, with no band score less than 5.5, or equivalent.		
PROFESSIONAL RECOGNITION Australian Computer Society (ACS)		

Bachelor of Information Technology (Business Information Systems)

Harness technology to help organisations achieve a competitive advantage. Develop skills in business processes and study subjects in data and information management, enterprise systems and business intelligence. You'll explore information security, multimedia, knowledge management, databases and emerging technologies in business.

LOCATION Mt Helen (Ballarat), Berwick (Melbourne), Online/Off-campus			
INTAKE February, July	DURATION 3 years	CRICOS 092106F	ANNUAL FEE \$25,100
ENTRY REQUIREMENTS Successful completion of Australian Year 12, or overseas equivalent. Overall Academic IELTS score of 6.0, with no band score less than 5.5, or equivalent.			
PROFESSIONAL RECOGNITION Australian Computer Society (ACS)			

Bachelor of Information Technology (Networking and Security)

Investigate how security breaches occur, how private information is vulnerable and ways to protect it. Delve into networks, their protocols and hardware and investigate how these systems can be vulnerable to a malicious attack. Learn how to defend business, government and individual's databases which hold sensitive data.

LOCATION Mt Helen (Ballarat), Brisbane (Queensland), Online/Off-campus		INTAKE February, July
DURATION 3 years	CRICOS 092109C	ANNUAL FEE \$25,100
ENTRY REQUIREMENTS Successful completion of Australian Year 12, or overseas equivalent. Overall Academic IELTS score of 6.0, with no band score less than 5.5, or equivalent.		
PROFESSIONAL RECOGNITION Australian Computer Society (ACS)		

Bachelor of Information Technology (Professional Practice)

Combine study and practical industry experience. Receive a guaranteed paid internship opportunity in industry worth over \$42,000 over the final two years of this degree as you study and undertake 1600 hours of work integrated learning with IBM® in Ballarat. Second and third year subjects are aligned with your agreed industry focus area in either software development, cloud or mainframe. This is a four year degree, however fast track options are available and encouraged.

LOCATION Mt Helen (Ballarat)		INTAKE February
DURATION 4 years	CRICOS 049564D	ANNUAL FEE \$25,100
ENTRY REQUIREMENTS This program is offered to International Students by Alternate Entry only. International students should enrol in the Bachelor of Information Technology, and then after one or more semesters with excellent results, students may be invited to undertake an interview to transfer into the Bachelor of Information Technology (Professional Practice). Overall Academic IELTS score of 6.0, with no band score less than 5.5, or equivalent.		
PROFESSIONAL RECOGNITION Australian Computer Society (ACS)		

Bachelor of Information Technology (Software Development)

This degree gives you the opportunity to learn new programming languages, architecture and paradigms to create new software applications. You will complete subjects in dynamic web development, data structures and algorithms and agile coding. Graduates may be involved in software release and post-release activities, including product launches, and implementation roles such as installation, configuration, programming/customisation, integration and data migration.

LOCATION Mt Helen (Ballarat), Online/Off-campus		INTAKE February, July
DURATION 3 years	CRICOS 092108D	ANNUAL FEE \$25,100
ENTRY REQUIREMENTS Successful completion of Australian Year 12, or overseas equivalent. Overall Academic IELTS score of 6.0, with no band score less than 5.5, or equivalent.		
PROFESSIONAL RECOGNITION Australian Computer Society (ACS)		

Graduate Certificate in Cognitive Enterprise

In this exciting qualification co-designed with global technology giant IBM, you'll learn the foundation of how to become a leader in digitally transforming organisations into cognitive enterprises. During this six month course you will advance your knowledge in digital revolution, IT problem solving, big data and analytics, cloud and enterprise computing, whilst also developing your analytical and communication skills.

LOCATION Mt Helen (Ballarat)		INTAKE February, July
DURATION 0.5 year	CRICOS 107471B	ANNUAL FEE \$13,450 per certificate
ENTRY REQUIREMENTS Applicants will have completed an undergraduate degree at AQF level 7 in information technology or in business. Students who have studied an AQF level business degree will need to have previously studied at least one information technology course to be approved for non-cognate entry. Cognate entry via a business degree will have to be approved via an articulation agreement. Overall Academic IELTS score of 6.0, with no band score less than 6.0, or equivalent.		

Courses, costs and locations are subject to variation.
For the most up to date information, visit study.federation.edu.au





Graduate Certificate in Enterprise Systems

Understand the role of enterprise systems in digital transformation, including the business value that could benefit organisations, through a combination of theoretical and practical learning, utilising ERPsim games and software from leading enterprise system vendors like SAP - the world's largest enterprise applications software company. Choose between two specialisations, Functional or Developer, based on your interest area and chosen career path.

LOCATION Mt Helen (Ballarat), Online/Off-Campus		INTAKE February, July
DURATION 0.5 years	CRICOS 106414H	ANNUAL FEE \$13,450 per certificate
ENTRY REQUIREMENTS A three-year degree in IT, science, engineering, business (major or minor in IT) or equivalent; or (2) A diploma in IT, science, engineering, business (major or minor in IT) or equivalent, and with the appropriate level of industry experience. Overall Academic IELTS score of 6.0, with no band score less than 6.0, or equivalent.		

Graduate Diploma of Cognitive Enterprise

The new Graduate Diploma of Cognitive Enterprise has been co-designed with global technology giant IBM to meet industry demand for career-ready graduates. During this 12 month course you will examine key aspects of digital revolution, big data and analytics, cloud and enterprise computing, whilst also developing your analytical, leadership, communication and IT project management skills. You also have the flexibility to choose two electives from IT or Business areas to help shape your future career.

LOCATION Mt Helen (Ballarat)		INTAKE February, July
DURATION 1 year	CRICOS 107472A	ANNUAL FEE \$26,900
ENTRY REQUIREMENTS Applicants will have completed an undergraduate degree at AQF level 7 in information technology or in business. Students who have studied an AQF level business degree will need to have previously studied at least one information technology course to be approved for non-cognate entry. Cognate entry via a business degree will have to be approved via an articulation agreement. Overall Academic IELTS score of 6.0, with no band score less than 6.0, or equivalent.		

Master of Applied Cyber Security

The Master of Applied Cyber Security program is designed to develop knowledge and skill sets in security science to produce skilled cyber security professionals for security administration/consultancy, incident analytics and response and industry solution/architect development.

LOCATION Mt Helen (Ballarat), Online/Off-campus, Brisbane, Berwick		INTAKE February, July, November
DURATION 2 years	CRICOS 102480H	ANNUAL FEE \$26,900
ENTRY REQUIREMENTS The entry requirement is successful completion of a degree that is the equivalent of a bachelor's degree, not necessarily in an IT-related discipline. Overall Academic IELTS score of 6.0, with no band score less than 6.0, or equivalent.		

Master of Cognitive Enterprise

Become a leader in digitally transforming organisations into cognitive enterprises with a degree co-designed with global technology giant IBM. Examine key aspects of big data and analytics, supply chains, intelligent workflows, digital transformations and hybrid combinations of intelligent platforms, whilst also developing your analytical, leadership, communication and IT project management skills. You will have the opportunity to work on an industry-led cognitive enterprise project and apply for a competitively selected paid semester long internship with IBM®. Graduates may work in national and multi-national organisations to lead and work within digital transformation projects.

LOCATION Mt Helen (Ballarat), Online/Off-campus		INTAKE February, July
DURATION 2 years	CRICOS 107283F	ANNUAL FEE \$26,900
ENTRY REQUIREMENTS Successful completion of a recognised three-year Australian bachelor degree in information technology or business. Students who have studied a business degree require at least one information technology course to be approved for non-cognate entry (full course). Cognate entry (entry with credits) via a business degree will have to be approved via an articulation agreement. Overall Academic IELTS score of 6.0, with no band score less than 6.0, or equivalent.		

"Federation University gives me lots of options with my subject selection. I enjoy gaming and programming, and I get to explore that through my choice of subjects."

Victor Carretero, Spain
Bachelor of IT, Brisbane Campus

Master of Data Science

This degree provides an opportunity for you to develop an advanced understanding of data science by incorporating and interpreting complex information, concepts and theories to relevant data science tools and methods to manage, process and analyse data. Throughout the degree, you will utilise your skills to handle large volumes of data, working with real-time data, cloud computing, unstructured data and statistical models.

LOCATION Mt Helen (Ballarat), Online/Off-campus		INTAKE February, July
DURATION 2 years	CRICOS 104808F	ANNUAL FEE \$26,900
ENTRY REQUIREMENTS Successful completion of a recognised 3 year Australian bachelor degree in science, mathematics, statistics, engineering, information technology or business. Students will be required to demonstrate they have previously studied introductory mathematics and at least one information technology course in their undergraduate degree. If they cannot, they must select an approved elective course in their first semester of study to meet the prerequisite requirements. Overall Academic IELTS score of 6.0, with no band score less than 6.0, or equivalent.		

Master of Technology (Enterprise Systems and Business Analytics)

This course provides students with an opportunity to gain up to date knowledge and skills to analyse, implement and use Enterprise Systems. Gain a deep understanding of relevant topics and technology such as big data, business analytics, cloud computing, IS security, project management and IT strategy, using cutting edge technologies from leading companies like SAP, IBM, SAS and Teradata.

LOCATION Mt Helen (Ballarat), Brisbane (Queensland)		INTAKE February, July, November
DURATION 2 years	CRICOS 095030G	ANNUAL FEE \$26,900
ENTRY REQUIREMENTS Successful completion of a recognised 3-year Australian bachelor degree or overseas equivalent. Overall Academic IELTS score of 6.0, with no band score less than 6.0, or equivalent.		
PROFESSIONAL RECOGNITION Australian Computer Society (ACS)		

Master of Technology (Software Engineering)

Gain specialist knowledge in advanced software engineering techniques. Design, implement and maintain IT systems using a well-informed software engineering approach and create high quality software in a systematic and efficient manner.

LOCATION Mt Helen (Ballarat), Brisbane (Queensland)		INTAKE February, July, November
DURATION 2 years	CRICOS 080497G	ANNUAL FEE \$26,900
ENTRY REQUIREMENTS Successful completion of a recognised 3-year Australian bachelor degree or overseas equivalent. Overall Academic IELTS score of 6.0, with no band score less than 6.0, or equivalent.		
PROFESSIONAL RECOGNITION Australian Computer Society (ACS)		

Performing Arts, Visual Arts and Design

Share your imagination

Culture enriches our lives. It engages us, provokes us, inspires us and connects us to each other and the communities we live in.

The Performing Arts, Visual Arts and Design play an important role in this. And as a university globally renowned for its rigorous, visionary and contemporary arts training – so do we.

Our staff will help unleash your curiosity, creativity and imagination. With years of experience, they understand what it takes to make it in the industry and have a successful career – and they'll do everything they can to help you do the same.

Dedicated Arts Academy

The Federation Arts Academy is an exciting creative hub located in the arts precinct of central Ballarat. You'll rehearse and perform in our fully equipped theatres, have access to spacious studios, alongside printmaking and papermaking facilities on campus.

Our Gippsland Arts Academy positions you at the cutting edge of contemporary art in well-equipped workshops and studios, and provides a strong link to the contemporary art world.



STUDY TYPE	LOCATION	DURATION (YEARS)	FEES (ANNUALLY)
PERFORMING ARTS, VISUAL ARTS AND DESIGN			
U Bachelor of Performing Arts	★ Ballarat	3	\$28,100
U Bachelor of Visual Arts	★ Ballarat ★ Gippsland	3	\$27,700
U Bachelor of Arts (Creative Arts) (Honours)	★ Ballarat	1	\$22,200
U Undergraduate bachelor degree			

Bachelor of Visual Arts

You will develop the skills to create your own future in the diverse creative industries. Our Arts Academy has specialised facilities for you to work in ceramics, drawing, printmaking, photography and painting. You will also explore your studio based practice through workshops of experimentation and self-discovery. As part of your studies you will participate in 8 hours of placement. All intensive teaching staff are practicing artists and designers with outstanding reputations both in Australia and internationally.

LOCATION Camp St (Ballarat)		INTAKE February
DURATION 3 years	CRICOS 106032M	ANNUAL FEE \$28,100
ENTRY REQUIREMENTS Selection is based on successful interview and folio presentation as well as successful completion of Australian Year 12, or overseas equivalent. Overall Academic IELTS score of 6.0, with no band score less than 6.0, or equivalent.		

Bachelor of Performing Arts

Our Arts Academy is renowned for its holistic and multidisciplinary approach to training contemporary performers. We develop your practice through a comprehensive curriculum that includes classes in acting, singing, voice, movement, dance, creativity, theatre-making, aerobic fitness and mindfulness. As part of your studies you will participate in 8 hours of placement. You will be prepared for a range of career opportunities in television and theatre, music theatre, opera, film, cabaret, comedy and multi-media performance.

LOCATION Camp St (Ballarat)		INTAKE February
DURATION 3 years	CRICOS 0100642	ANNUAL FEE \$28,100
ENTRY REQUIREMENTS Selection is based on successful interview and audition as well as successful completion of Australian Year 12, or overseas equivalent. Overall Academic IELTS score of 6.0, with no band score less than 6.0, or equivalent.		

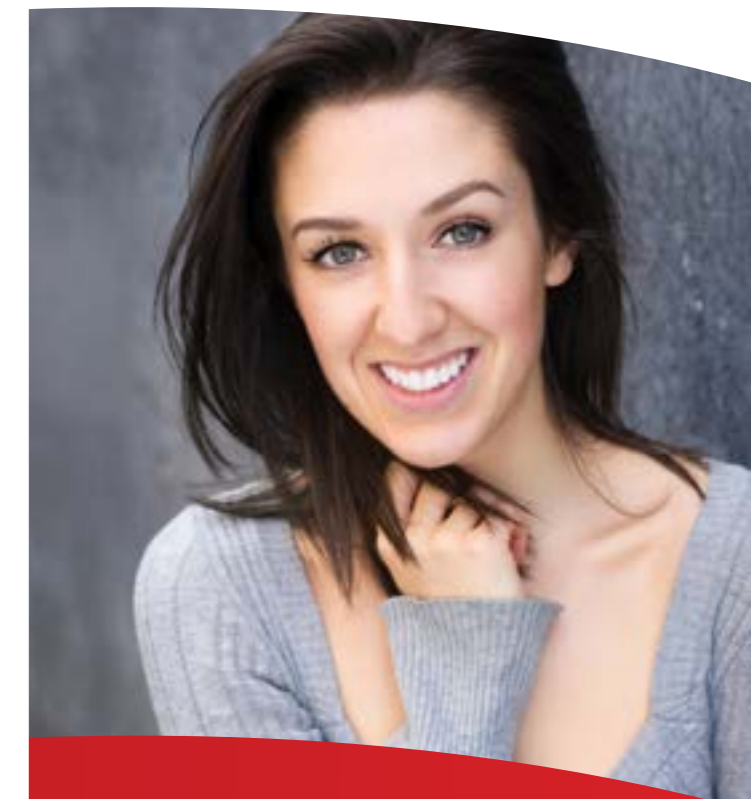
Bachelor of Arts (Creative Arts) (Honours)

Choose to study any discipline within Visual and Performing Arts such as ceramics, drawing, printmaking, painting, performance and dance with this fourth year course. The Bachelor of Arts (Creative Arts) (Honours) is a fourth-year program that serves as a prelude to a higher degree in research or to professional practice in a range of careers that entail advanced research work.

With half the program dedicated to a thesis-based experience of independent research conducted professionally, the program prepares individuals for professional or research work in the disciplinary field of their preference. It provides training in methodology, research skills and theoretical inquiry.

LOCATION Camp St (Ballarat), Churchill (Gippsland)		INTAKE February
DURATION 1 year	CRICOS 097880E	ANNUAL FEE \$22,200
ENTRY REQUIREMENTS Applicants to this program must have completed an Australian undergraduate degree or equivalent with no less than "D" (Distinction) or equivalent in the major area in which applicants have chosen to pursue their Honours studies. Overall Academic IELTS score of 6.0, with no band score less than 6.0, or equivalent.		

Courses, costs and locations are subject to variation.
For the most up to date information, visit study.federation.edu.au



"The Acting program has gone above and beyond in exceeding my expectations. What I enjoyed most was the quality of training; the instructors had such a high level of expertise and experience and have really structured the program in such a way so that you can get the most out of it. I also loved my classmates, who were fabulous, creative and brilliant people and the strength of the performing arts programs."

The best aspects of the program are definitely the opportunities to perform both in Ballarat and Melbourne. This ultimately helped us gain external work experience before graduating with practical and technical skills."

Brianna MacDonald, Canada
Bachelor of Arts (Acting) graduate

Psychology

Your career in Psychology starts here

Do you want to learn about why people think, feel, and behave the way they do? A degree in Psychology at Federation University will prepare you for a career in psychology and related professions. Our APAC accredited Psychology degrees will support you at each stage of your career development.

When you study Psychology at Federation University, you will acquire the knowledge and skills you need for the career you want. Our study options and smaller class sizes provide the opportunity to learn, develop, and apply skills that will be valuable in your professional and personal lives. This includes oral and written communication, research, and high level problem solving and critical thinking skills.



STUDY TYPE	LOCATION	DURATION (YEARS)	FEES
PSYCHOLOGY			
U Bachelor of Psychological Science	★ Ballarat ★ Berwick	3	\$26,500
U Bachelor of Psychological Science (Honours)	★ Ballarat ★ Berwick	1	\$26,500
U Undergraduate bachelor degree			

Bachelor of Psychological Science

This foundation course delivers fundamental knowledge, theory and understanding of different aspects of psychology. Explore a range of subjects to examine the complexities of human thought and behaviour, including developmental psychology, cognitive psychology, social psychology, abnormal psychology and personality.

LOCATION Mt Helen (Ballarat), Berwick (Melbourne),		INTAKE February, July
DURATION 3 years	CRICOS 055553A	ANNUAL FEE \$26,500
ENTRY REQUIREMENTS Successful completion of Australian Year 12, or overseas equivalent. Overall Academic IELTS score of 7.0, with no band score less than 6.5, or equivalent.		
PROFESSIONAL RECOGNITION Australian Psychology Accreditation Council (APAC).		

Bachelor of Psychological Science (Honours)

This degree achieves a balance between general professional, specific practitioner, and research-related skills, comprising specialist study in both professional psychology and psychological research. With a strong research emphasis, you will plan, implement and report on a research project under supervision, in addition to undertaking a number of core subjects (Psychological Practice, Psychological Research, Integrating Research and Practice and Psychological Assessment). The course is for students who wish to engage in research and professional practice in the field of psychology.

LOCATION Mt Helen (Ballarat), Berwick (Melbourne)		INTAKE February
DURATION 1 year	CRICOS 088971K	ANNUAL FEE \$26,500
ENTRY REQUIREMENTS Australian Psychology Accreditation Council (APAC) accredited; 3 year sequence in psychology and qualified for an Australian undergraduate degree (or overseas equivalent) by the Australian Psychological Society (APS) and meets a minimum grade point average of 6.0 (Distinction) is required. GPA is calculated using ALL attempts (successful and unsuccessful) at second and third year psychology courses only. Overall Academic IELTS score of 7.0, with no band score less than 6.5, or equivalent.		
Please note: meeting minimum requirements does not guarantee entry as each year the number of applicants greatly exceeds the number of places.		
PROFESSIONAL RECOGNITION Australian Psychology Accreditation Council (APAC).		

Science

Push for progress

Interested in fighting degenerative diseases? Developing healthier food products? The birth of our planet? Assessing humanity's impact on climate change? Finding out how living things work?

At Federation University, our Science degrees will take you in some truly fascinating directions – be it biomedical, environmental, chemical, animal, nutritional or even veterinary and wildlife science.

Equal parts immersive and practical, you'll build the skills and knowledge you need to break into this ever-changing field. To make sure you're work-ready, you'll be learning in research labs, commercial facilities and field trips, and putting your skills to the test in industry placements.



STUDY TYPE

LOCATION

DURATION (YEARS)

FEES (ANNUALLY)

SCIENCE

U	Bachelor of Biomedical Science	★ Ballarat ★ Berwick ★ Gippsland	3	\$28,600
U	Bachelor of Geoscience	★ Ballarat	3	\$28,600
U	Bachelor of Environmental and Conservation Science	★ Ballarat ★ Berwick ★ Gippsland	3	\$28,600
U	Bachelor of Science	★ Ballarat ★ Gippsland	3	\$28,600
U	Bachelor of Science (Honours)	★ Ballarat ★ Berwick ★ Gippsland	1	\$28,600
U	Bachelor of Sustainable Food Systems	★ Ballarat ★ Gippsland	3	\$28,600
U	Bachelor of Veterinary and Wildlife Science	★ Ballarat ★ Berwick ★ Gippsland	3	\$28,600

U Undergraduate bachelor degree

Bachelor of Biomedical Science

Biomedicine plays a major role in helping people lead healthier lives. Study lifespan nutrition, microbiology, molecular biology, metabolism and applied biochemistry. Be prepared for a career in a range of health-related industries such as laboratory technology, medical sales, and pharmaceuticals or further study in research or allied health.

LOCATION Mt Helen (Ballarat), Berwick (Melbourne), Churchill (Gippsland)			
INTAKE February, July	DURATION 3 years	CRICOS 062139A	ANNUAL FEE \$28,600
ENTRY REQUIREMENTS Successful completion of Australian Year 12 with one final year course in Mathematics (any) or one final year course of either Chemistry, Biology or Physics or overseas equivalent. Overall Academic IELTS score of 6.0, with no band score less than 6.0, or equivalent.			

Bachelor of Geoscience

Explore our planet in theory and field experience, using mapping, technology and historical data to build conceptual models, and gain experience in identifying and mitigating natural hazards and learn to extract resources in a sustainable way.

LOCATION Mt Helen (Ballarat)		INTAKE February, July	
DURATION 3 years	CRICOS 088139J	ANNUAL FEE \$28,600	
ENTRY REQUIREMENTS Successful completion of Australian Year 12 with one final year course in Mathematics (any) and one final year course of either Chemistry, Biology or Physics or overseas equivalent. Overall Academic IELTS score of 6.0, with no band score less than 6.0, or equivalent.			

Bachelor of Environmental and Conservation Science

Learn about the management, conservation and rehabilitation of our natural and degraded ecosystems. With a strong focus on the Australian environment, you will explore subject areas such as ecology and wildlife, water and climate, mine site rehabilitation, landscape management and restoration.

LOCATION Mt Helen (Ballarat), Berwick (Melbourne), Churchill (Gippsland)			
INTAKE February, July	DURATION 3 years	CRICOS 088140E	ANNUAL FEE \$28,600
ENTRY REQUIREMENTS Successful completion of Australian Year 12 with one final year course in Mathematics (any) or one final year course of either Chemistry, Biology or Physics or overseas equivalent. Overall Academic IELTS score of 6.0, with no band score less than 6.0, or equivalent.			

Bachelor of Science

If you are fascinated by science, this comprehensive degree could be your passport to an exciting future in one of many diverse areas. Tailor this course to your specific career destination and interests. Majors include Biochemistry, Biological Science, Molecular Biology, Behavioural Science, Chemistry, Ecology, Environmental Restoration, Exercise Science, Food Science, Health and Nutrition, Mathematics and Microbiology.

LOCATION Mt Helen (Ballarat), Churchill (Gippsland)			
INTAKE February, July	DURATION 3 years	CRICOS 062141G	ANNUAL FEE \$28,600
ENTRY REQUIREMENTS Successful completion of Australian Year 12 with one final year course in Mathematics (any) or Science (any), with a study score of at least 20 in either of these subjects, or overseas equivalent. Overall Academic IELTS score of 6.0, with no band score less than 6.0, or equivalent.			

Bachelor of Science (Honours)

Undertake a research project, as well as coursework studies in research methodologies and communication. This is a fourth-year course for graduates of science, IT and mathematical science undergraduate degrees. It serves as a prelude to a higher degree in research.

LOCATION Mt Helen (Ballarat), Berwick (Melbourne), Churchill (Gippsland)			
INTAKE February, July	DURATION 1 year	CRICOS 088661B	ANNUAL FEE \$28,600
ENTRY REQUIREMENTS Successful completion of Bachelor degree in Science with Distinction average or above in core discipline courses in second and third year. Overall Academic IELTS score of 6.0, with no band score less than 6.0, or equivalent.			

Bachelor of Sustainable Food Systems

Food sustainability is the study of food security, health, safety, quality and affordability, influenced by climate change and the environment. This unique degree, developed in collaboration with food industry, contains an embedded Diploma of Food Science and Technology that develops core knowledge and practical skills in food science. In the second half of the degree you will pursue an interest by selecting one of Food Processing or Sustainable Food Production, as well as undertake an industry placement of 200 hours providing valuable and relevant workplace experience.

LOCATION Mt Helen (Ballarat), Churchill (Gippsland)			INTAKE February, July
DURATION 3 years	CRICOS 106562G	ANNUAL FEE \$28,600	
ENTRY REQUIREMENTS Successful completion of Australian Year 12 with one final year course in Mathematics (any) or Science (any), or overseas equivalent. Non-year 12 applicants must have a HE or VET background and/or relevant work/life experience and complete a personal statement. Overall Academic IELTS score of 6.0, with no band score less than 6.0, or equivalent.			

Bachelor of Veterinary and Wildlife Science

This degree offers a local and international perspective of animal health science and wildlife conservation. It provides hands-on activities with opportunities to explore local and international animal conservation parks, animal production farms and a third-year work placement. You will learn about diagnostics and treatments for a range of diseases that infect wild and domesticated animals, while studying courses including biochemistry, immunology, microbiology, pathophysiology and animal husbandry. Career pathways include veterinary medicine postgraduate programs, animal health scientists, wildlife officers and keepers.

LOCATION Mt Helen (Ballarat), Berwick (Melbourne), Churchill (Gippsland)			
INTAKE February, July	DURATION 3 years	CRICOS 088138K	ANNUAL FEE \$28,600
ENTRY REQUIREMENTS Successful completion of Australian Year 12 with one final year course in Mathematics (any) or one final year course of either Chemistry, Biology or Physics or overseas equivalent. Overall Academic IELTS score of 6.0, with no band score less than 6.0, or equivalent.			

Courses, costs and locations are subject to variation.
For the most up to date information, visit study.federation.edu.au

Sport, Health, Physical and Outdoor Education

Turn your passion into a career

If you have a talent for motivating and inspiring people – and want to pursue this as your career – our health, sport and physical education qualifications will give you the tools you need to make it happen, anywhere in the world.

At our new state of the art Health and Sports Precinct, our students develop their practical and clinical skills in a high-quality learning environment. Offering the ideal backdrop to extend our world-class research, these facilities also provide sports science students with commercial experience in the student-led clinic and community gymnasium. The updated anatomy and physiology laboratories also supports learning and teaching in health related courses such as exercise science, physical education, nursing, paramedicine and biomedical science.



STUDY TYPE	LOCATION	DURATION (YEARS)	FEES (ANNUALLY)
SPORT, HEALTH, PHYSICAL AND OUTDOOR EDUCATION			
U Bachelor of Exercise and Sport Science	★ Ballarat	3	\$31,600
U Bachelor of International Sport Management	★ Online	3	\$18,300
P Master of Clinical Exercise Physiology	★ Ballarat	1.5	\$31,600

U Undergraduate bachelor degree P Postgraduate studies ★ Online learning is only for students not on a TU 500 visa

Bachelor of Exercise and Sport Science

Develop knowledge, instructional and practical skills with core studies in biomechanics, anatomy, physiology, exercise and health whilst pursuing an interest in either applied exercise programming, health or teaching. You will examine key aspects of sport science and learn how to plan, implement and evaluate exercise delivery for healthy and diverse populations. Apply your knowledge and skills through completing 250 placement hours within the industry

LOCATION	INTAKE	
Mt Helen (Ballarat)	February, July	
DURATION	CRICOS	ANNUAL FEE
3 years	077882B	\$31,100
ENTRY REQUIREMENTS		
Successful completion of Australian Year 12 with final-year mathematics courses or overseas equivalent. Overall Academic IELTS score of 7.0, with no band score less than 7.0, or equivalent.		
PROFESSIONAL RECOGNITION		
Exercise and Sports Science Australia (ESSA).		

Master of Clinical Exercise Physiology

Explore how exercise sciences integrates with the practical ability to develop and manage exercise programs for the prevention, treatment and ongoing management of injuries, chronic disease and complex conditions. Clinical knowledge, skills and experience is further applied to the completion of a research thesis or project. You will complete 540 hours of placement during your degree in the on-campus clinic and a range of external clinical settings.

LOCATION	INTAKE	
Mt Helen (Ballarat)	February	
DURATION	CRICOS	ANNUAL FEE
1.5 years	083032E	\$31,600
ENTRY REQUIREMENTS		
Graduate Diploma of Clinical Exercise Physiology course-work component or overseas equivalent. Overall Academic IELTS score of 7.0, with no band score less than 7.0, or equivalent.		
PROFESSIONAL RECOGNITION		
Exercise and Sport Science Australia (ESSA).		

Bachelor of International Sport Management

Delivered in partnership with the World Academy of Sport, this online degree combines industry expertise with practical academic insights. Gain access to exclusive case studies and interviews from world leaders in sport management and become a future sport leader with 21st century skills. As part of your degree, second year students will complete 150 hours of placement. Students in their third and final year will complete a minimum of 280 hours of placement, or up to 560 hours in the internship course if eligible.

LOCATION	INTAKE	
Online	February, July	
DURATION	CRICOS	ANNUAL FEE
3 years	N/A	\$18,300
ENTRY REQUIREMENTS		
Successful completion of Australian Year 12 with at least Year 11 Mathematics; or overseas equivalent. Overall Academic IELTS score of 7.0, with no band score less than 7.0, or equivalent.		
PROFESSIONAL RECOGNITION		
Applicants will have completed the equivalent of Victorian Certificate of Education (VCE) Year 12 with an English mark of 25 or higher and will have completed at least Year 11 Mathematics or equivalent.		



Courses, costs and locations are subject to variation.
For the most up to date information, visit study.federation.edu.au

Higher Degrees by Research

Research with impact

From addressing challenges to help regional communities recover from bushfire and drought to answering complex global health care challenges – research at Federation University Australia makes a difference in the real world.

We collaborate with communities and industries across Australia and overseas and our work has measurable impact on our wider society.



ERA 2018 RESULTS		
	SPECIFIC FIELDS OF RESEARCH (4 DIGIT FoR CODE)	BROAD FIELDS OF RESEARCH (2 DIGIT FoR CODE)
<p>***** RATING 5 WELL ABOVE WORLD STANDARD</p>	Applied Mathematics Environmental Science and Management Civil Engineering Clinical Sciences Human Movement and Sports Science Nursing	Environmental Sciences
<p>**** RATING 4 ABOVE WORLD STANDARD</p>	Artificial Intelligence and Image Processing	Medical and Health Sciences
<p>*** RATING 3 WORLD STANDARD</p>	Pure Mathematics Education Systems Sociology Psychology Historical Studies	Mathematical Sciences Information and Computing Sciences Studies In Human Society Psychology and Cognitive Sciences

Research Priority Areas and Emerging Research Areas

Our current research priorities are:

1. Health and Wellbeing
2. Society and the Environment
3. Virtual, Digital and Computational Environments

We also recognise our emerging areas of research strength. We are seeking to expand the volume of world class research in broad discipline areas including:

4. Education
5. Engineering
6. History and Archaeology
7. Commerce, Management, Tourism and Services

federation.edu.au/applyforresearch

Graduate research studies

Students can choose to undertake a Masters by Research or Doctor of Philosophy. Supervisions are available across a large variety of study areas including Applied Science, Arts, Business, Education, Engineering, Human Movement, Humanities and Social Science, Information Technology, Nursing, Occupational Health and Safety, Psychology and Science.

Annual fees for Higher Degrees by Research vary from \$23,600 to \$28,800.

federation.edu.au/research/graduate-research-school

Graduate research studies

We offer supervisions across a large range of study areas.

STUDY AREA	MASTERS	PHD (DOCTOR OF PHILOSOPHY)
Applied Science	✓	
Arts	✓	✓
Business	✓	✓
Education		✓
Engineering	✓	✓
Human Movement	✓	✓
Humanities and Social Science		✓
Information Technology	✓	✓
Nursing	✓	✓
Occupational Health and Safety		✓
Psychology		✓
Science	✓	✓

Not all programs are available on all campuses.

Table provided on following page for study area offering by campus.

Annual Fees for Higher Degrees by Research vary from \$23,600 to \$28,800. Find full details at federation.edu.au/applyforresearch

Master by Research

This Master by Research program sees candidates working with a Principal Supervisor appointed by the Research Higher Degrees Sub Committee with the approval of the School.

LOCATION	DURATION
Mt Helen Campus (Ballarat), Berwick Campus (Melbourne), Brisbane Campus (Queensland), Gippsland Campus (Churchill)	1.5 years
ENTRY REQUIREMENTS	
Bachelor degree and subsequent additional honours degree (first or second class) which includes a dissertation demonstrating the ability to undertake research at a Masters level; OR Honours equivalence such as a combination of professional qualification and research experience including Master by coursework. Overall Academic IELTS score of 6.5, with no band score less than 6.0, or equivalent.	

Doctor of Philosophy

This Doctor of Philosophy program sees candidates working with a Principal Supervisor appointed by the Research Higher Degrees Sub Committee with the approval of the School.

LOCATION	DURATION
Mt Helen Campus (Ballarat), Berwick Campus (Melbourne), Brisbane Campus (Queensland), Gippsland Campus (Churchill)	3 to 3.5 years
ENTRY REQUIREMENTS	
Bachelor degree and subsequent additional honours degree (first or second class); or Master by Research degree; or current Federation University Australia Master by Research candidate with sufficient research capability to demonstrate PhD capacity assessed via formal Confirmation of Candidature process; or Honours equivalence for applicants who have completed a Master by coursework or have appropriate professional experience. All students must have previously completed a thesis or dissertation demonstrating the ability to undertake research at a PhD level. Overall Academic IELTS score of 6.5, with no band score less than 6.0, or equivalent.	

Courses, costs and locations are subject to variation. For the most up to date information, visit study.federation.edu.au

Apply for Research

Visit [federation.edu.au/applyforresearch](https://www.federation.edu.au/applyforresearch) to familiarise yourself with:

- The research priority areas as well as the strategic research directions of the school in which you intend to enrol.
- Check that you meet the academic entry requirements, and the English language proficiency requirements.
- Prepare your application and compile your evidence and supporting documentation.

International applicants should apply using the StudyLink application system.

"I've had a great experience at Federation. After studying in Lagos and working at the Nigerian Institute of Medical Research, I was looking for a university that would be able to supervise and support my research studies, and FedUni has been the perfect place.

My PhD investigates how our genes can predict chronic kidney disease before it occurs and improve outcomes for people affected. The academics here have been very supportive and curious about my previous work. The science labs are amazing, and I've received great scholarships, which has really made my life a lot easier.

The University also provided great support during COVID, helping me develop the FedUni African Association, which distributed support packs to students. We also run events, workshops and activities to connect and inspire African students, helping people settle in and make the most of new opportunities.

Plus, I really love Ballarat! It's the perfect mix of convenient city lifestyle and relaxed country feel. I love going on walks and runs, so I really enjoy the natural scenery, especially around the Mt Helen Campus. "

Arinola Akinnibosun
Doctor of Philosophy (Science)



	LOCATION	DURATION (YEARS)	IELTS	INTAKE	CRICOS CODE	FEES (ANNUAL)
HIGHER DEGREES BY RESEARCH						
Master of Applied Science (Biological Science)	★ Ballarat ★ Berwick	1.5	6.5/6.0	Anytime	001501D	\$28,800
Master of Applied Science (Psychology)	★ Ballarat ★ Berwick	1.5	6.5/6.0	Anytime	014682J	\$28,800
Master of Arts (by research)	★ Ballarat ★ Berwick ★ Gippsland	1.5	6.5/6.0	Anytime	041559K	\$23,600
Master of Arts (by research)	★ Ballarat	1.5	6.5/6.0	Anytime	044995K	\$23,600
Master of Business (Research)	★ Ballarat ★ Berwick ★ Gippsland	1.5	6.5/6.0	Anytime	023221G	\$23,600
Master of Computing	★ Ballarat ★ Berwick ★ Gippsland	1.5	6.5/6.0	Anytime	052879C	\$23,600
Master of Education	★ Ballarat ★ Berwick	1.5	6.5/6.0	Anytime	092210F	\$23,600
Master of Engineering Science	★ Ballarat	1.5	6.0/6.0	Anytime	015134G	\$28,800
Master of Health Research	★ Ballarat ★ Berwick ★ Gippsland	1.5	6.5/6.0	Anytime	108313H	\$23,600
Master of Mathematical Sciences	★ Ballarat ★ Berwick	1.5	6.5/6.0	Anytime	052605G	\$23,600
Master of Nursing (by Research)	★ Ballarat ★ Berwick ★ Gippsland	1.5	7.0/6.5	Anytime	092872A	\$23,600
Doctor of Philosophy (Business)	★ Ballarat ★ Berwick ★ Gippsland	3	6.5/6.0	Anytime	033922G	\$23,600
Doctor of Philosophy (Education)	★ Ballarat ★ Berwick	3	6.5/6.0	Anytime	016654G	\$23,600
Doctor of Philosophy (Engineering)	★ Berwick	3	6.5/6.0	Anytime	023234C	\$28,800
Doctor of Philosophy (Human Movement and Sport Sciences)	★ Ballarat ★ Berwick	3	6.5/6.0	Anytime	026139M	\$28,800
Doctor of Philosophy (Humanities and Social Sciences)	★ Ballarat ★ Berwick ★ Gippsland	3	6.5/6.0	Anytime	023232E	\$23,600
Doctor of Philosophy (Information Technology)	★ Ballarat ★ Berwick ★ Gippsland ★ Brisbane	3	6.5/6.0	Anytime	023229M	\$23,600
Doctor of Philosophy (Mathematical Science)	★ Ballarat ★ Berwick	3	6.5/6.0	Anytime	092058J	\$23,600
Doctor of Philosophy (Nursing)	★ Ballarat ★ Berwick ★ Gippsland	3	6.5/6.0	Anytime	092871B	\$23,600
Doctor of Philosophy (Physical Sciences)	★ Ballarat	3	6.5/6.0	Anytime	016653J	\$28,800
Doctor of Philosophy (Psychology)	★ Berwick	3	6.5/6.0	Anytime	081098C	\$28,800
Doctor of Philosophy (Science)	★ Ballarat ★ Berwick	3	6.5/6.0	Anytime	044127K	\$28,800
Doctor of Philosophy (Visual and Performing Arts)	★ Ballarat	3	6.5/6.0	Anytime	023233D	\$23,600
Doctor of Philosophy (Victorian Institute of Occupational Safety and Health)	★ Ballarat ★ Berwick	3	6.5/6.0	Anytime	096209M	\$28,800

★ Mt Helen Campus (Ballarat) ★ Camp Street, Arts Academy (Ballarat)

Courses, costs and locations are subject to variation. For the most up to date information, visit [study.federation.edu.au](https://www.study.federation.edu.au)

Your next steps

Whether you're applying directly or via an agent, just follow these simple steps



See pages 66-69 for Higher Degrees by Research or visit federation.edu.au/research

Step 1

FIND YOUR COURSE

Find the Federation University course you wish to study

- For undergraduate and postgraduate courses visit study.federation.edu.au
- Check you meet the academic entry requirements
- Check you meet the English language requirements
- Check for any essential requirements that you need to complete in addition to your application.

Essential requirements may include auditions, tests or interviews.



Step 2

APPLY

- International students or their agents must apply through the StudyLink online application system

Visit federation.edu.au/international/study-at-federation/apply

- Follow the instructions and ensure you have attached all relevant supporting documents.
- Details of documentation required is available at federation.edu.au/international/prepare

Note: Be aware of cut off dates.



Step 3

ASSESSMENT

Your application will be assessed by our team

- English language requirements
- Academic entry requirements



Step 4

OFFER MADE Congratulations!

You will be sent an International Student Offer and Acceptance Pack that includes:

- Letter of Offer
- Information for accepting your offer
- GTE and/or financial assessment forms*
Refer to page 78 and federation.edu.au/SSVF for more information.

*Sometimes, international students will be required to complete a pre-visa screening process as a condition of their offer under the requirements of the Simplified Student Visa Framework (SSVF). The requirements will depend on a number of factors.



Step 5

ACCEPTANCE AND PAYMENT

Once you have provided all documentation and met all conditions, sign the acceptance of your offer letter and pay the required fees. We will then issue you with an electronic Confirmation of Enrolment (CoE).

Note: Payments to Federation must be made via Western Union through your StudyLink application.



Step 6

VISA APPLICATION WITH CoE

You will need your CoE to apply for your Australian student visa.

More information on the visa application process is available at immi.homeaffairs.gov.au

Note: Make sure you plan in advance to get your visa in time.



Step 7

PREPARE TO ARRIVE

We will send you an International Student Support Guide to help you understand what to expect.

Flights

Make sure you arrive in time to attend the compulsory International Student Orientation Program that is held in the weeks before semester commences

Accommodation

Check out the offers from FedLiving – on-campus accommodation in Ballarat, Berwick and Gippsland (see page 10)



Academic entry requirements



Academic entry

Undergraduate courses

Applicants must be over 18 years of age at the time the Confirmation of Enrolment (CoE) is issued.

Prospective students must have completed Australian Year 12 or overseas equivalent (refer to the table below and opposite).

Some courses may require additional specific entry requirements. For full details please visit study.federation.edu.au

Postgraduate courses

Prospective students must have completed an Australian Bachelors degree or overseas equivalent. Some courses may have additional specific entry requirements.

For full details please visit study.federation.edu.au

Table of equivalence

The equivalence of qualifications from countries not listed in the table below and opposite will be assessed individually.

Country	Higher Education Diploma Programs	Undergraduate Programs
Global	Cambridge General Certificate of Education Advanced Level (GCE 'A' Levels) or Pearson International Advanced Levels with 4 points calculated on 3 A and AS level subjects. Advanced Level mark A=5, B=4, C=3, D=2, E=1. Advanced Subsidiary Level mark calculated as half of A level points.	Cambridge General Certificate of Education Advanced Level Cambridge (GCE 'A' Levels) or Pearson International Advanced Levels with 7 points calculated on 3 A and AS level subjects. Advanced Level mark A=5, B=4, C=3, D=2, E=1. Advanced Subsidiary Level mark calculated as half of A level points.
	International Baccalaureate Diploma (IB) with a minimum score of 22 from 6 subjects.	International Baccalaureate Diploma (IB) with a minimum score of 24 from 6 subjects.
Albania	Case-by-case basis.	Successful completion of at least one-year post-secondary study at a recognised institution.
Algeria	Case-by-case basis.	Successful completion of at least one-year post-secondary study at a recognised institution.
Angola	Case-by-case basis.	Successful completion of at least one-year post-secondary study at a recognised institution.
Australia	Completion of Year 12 or alternative pathway program/RPL.	Successful completion of Year 12 or completion of Foundation program or alternative pathway program, or equivalent.
Bahrain	Successful completion of the General Secondary Education Certificate (Tawjahiya or Shehadet AlThanawiya) with a grade average of 80%.	Successful completion of at least one-year post-secondary study at a recognised institution.
Bangladesh	Higher School Certificate (HSC) with GPA of 3.5 based on a 5-point GPA scale.	Higher School Certificate (HSC) with GPA of 4 based on a 5-point GPA scale.
Bhutan	Bhutan Higher Secondary Education Certificate (BHSEC) with a grade average of 60% in the best four academic subjects.	Bhutan Higher Secondary Education Certificate (BHSEC) with a grade average of 80% in best 4 academic subjects.
Brazil	Completion of Diploma/Certificado de Ensino Medio or equivalent with a grade average of 70% (Grade of medio (ME or average).	Successful completion of at least one-year post-secondary study at a recognised institution.
Cambodia	Completion of the Diploma of Upper Secondary Education with a C grade average.	Successful completion of at least one-year post-secondary study at a recognised institution.
Canada	Completion of Canadian Provincial High School Diploma (Senior Secondary School).	Successful completion of Canadian Provincial High School Diploma with 60%.
Chile	Completion of the Certificate of Secondary Education (Licencia de Educación Media) with a Grade average of 5.0 to 5.5 (Bueno).	Successful completion of at least one-year post-secondary study at a recognised institution.

Country	Higher Education Diploma Programs	Undergraduate Programs
China	Gao San (Senior High 3) (Year 12) with an average of 60% in four academic subjects.	Gao San (Senior High Year 3) (Year 12) with an average of 75% in four academic subjects. OR 高考 Gao Kao cut-off score for Tier 2 Chinese Universities. OR Completion of one year post-secondary study with at least an average score of 70% at a recognized institution.
Colombia	Completion of Bachiller / Bachillerato (Secondary School Certificate) Grade average of 70 percent or higher in final year.	Successful completion of at least one-year post-secondary study at a recognised institution.
Congo (Democratic Republic of)	Case-by-case basis.	Successful completion of at least one-year post-secondary study at a recognised institution.
Fiji	Completion of Form 7.	Completion of Form 7 with C or better in all subjects.
Ghana	West African GCE A Level with overall score of 8 points (refer to GCE A Level points).	West Africa GCE A Level with overall score of 10 points (refer to GCE A Level points).
Hong Kong	Completion of Hong Kong Diploma of Secondary Education (HKDSE). A minimum of 10 points for four core subjects (where: 5* 5**=6, 5=5, 4=4, 3=3, 2=2, 1=1 & A*=6, A=5, B=4, C=3, D=2, E=1 & Attained with Distinction=3, Attained=1).	Completion of Hong Kong Diploma of Secondary Education (HKDSE) A minimum of 15 points for four core subjects and two electives. (where 5**=6, 5*=6, 5=5, 4=4, 3=3, 2=2, 1=1; A*=6, A=5, B=4, C=3, D=2, E=1; and Attained with Distinction = 3, Attained = 1).
India	Completion of All India Senior School Certificate (CBSE) or Indian School Certificate (CISCE) With an average of 55% in best four academic subjects*. OR All State Boards (Higher Secondary Certificate) with an average of 60%. In the best four academic subjects*. *excludes local languages, work experience, physical education and other non-academic subjects.	Completion of All India Senior School Certificate (CBSE) or Indian School Certificate (CISCE) With an average of 60% in best four academic subjects*. OR All State Boards (Higher Secondary Certificate) with an average of 65%. In the best four academic subjects*. *excludes local languages, work experience, physical education and other non-academic subjects.
Indonesia	Sekolah Menengah Atas (SMA) 3 (Year 12) or Surat Keterangan Hasil Ujian Nasional (SKHUN or previously STK). With an overall grade average of 6 out of 10.	Sekolah Menengah Atas (SMA) 3 (Year 12) or Surat Keterangan Hasil Ujian Nasional (SKHUN or previously STK) with an overall grade average of 7 out of 10, or GCE A-levels with passing grades in three subjects.
Italy	Completion of Esame di Stato with an overall average of 55%.	Completion of Esame di Stato with overall average of 60%.
Japan	Completion of Kotogakko Sotsugyo Shosho (Upper Secondary Certificate of Graduation) with a GPA of 2.75 out of 5.	Completion of Kotogakko Sotsugyo Shosho (Upper Secondary School Certificate of Graduation) with a GPA of 3 out of 5.
Kenya	Completion of Kenya Certificate of Secondary Education (KCSE) Minimum grade average of C+ in 7 subjects.	Completion of Kenya Certificate of Secondary Education (KCSE) with minimum grade average of B in 8 subjects. OR Satisfactory completion of one year post-secondary study at a recognized institution.
Korea (Republic of) South	Completion of Immungye Kodung Hakkyo Chorupjang (Upper Secondary Certificate) with overall pass of 60%.	Completion of Immungye Kodung Hakkyo Choeupchang (Upper Secondary Certificate) with overall pass of 65%.
Kuwait	Completion of General Secondary Certificate (Shahadat-al-Thanawaya alAama) Grade average of 75%.	Completion of General Secondary Certificate (Shahadat-al-Thanawaya alAama) with overall average of 80%.



Country	Higher Education Diploma Programs	Undergraduate Programs
Lebanon	Completion of the Baccalaurat Libanais (Lebanese Baccalaureate) with a minimum overall grade of 10.	Completion of Baccalaurat Libanais (Lebanese Baccalaureate) with minimum overall grade of 12.
Malaysia	Sijil Tinggi Pelajaran Malaysia (STPM) (Year 13) with a score of 4 points calculated on the sum of 3 subjects where A=5, B=4, C=3, D=2, E=1	Sijil Tinggi Pelajaran Malaysia (STPM) (Year 13) with a score of 6 points calculated on the sum of 3 subjects where A=5, B=4, C=3, D=2, E=1. OR Chinese independent high school Unified Examination Certificate (UEC-SML) with a score of 12 points calculated on the sum of the best 5 academic subjects (excluding English general paper, Chinese, Bahasa Malaysia) where A1=8, A2=7, B3=6, B4=5, B5=4, B6=3, C7=2, C8=1.
Mauritius	Successful completion of 2 Cambridge International or Edexcel GCE A Level examinations with an aggregate score of 4 (40%). A* - 90-100, A – 80-89, B – 70 -79, C – 60-69, D - 50-59, E - 40-49, U - ungraded.	Successful completion of 3 Cambridge International or Edexcel GCE A Level examinations with an aggregate score of 8 (80%). A* - 90-100, A – 80-89, B – 70 -79, C – 60-69, D - 50-59, E - 40-49, U - ungraded.
Mongolia	Completion of School Leaving Certificate (Gerchilgee) with a minimum grade average of 70% .	Completion of School Leaving Certificate (Gerchilgee) with a minimum grade average of 85%.
Myanmar	Completion of Basic Education High School Examination (Matriculation) with an overall average of 75%	Successful completion of at least one-year post-secondary study at a recognised institution.
Nepal	Nepalese Higher Secondary Certificate (Year 12) with average grade 60% in final year results (Pre 2018) . OR National Examination Board (NEB) (post 2018) Certificate with GPA 2.4.	Nepalese Higher Secondary Certificate (Year 12) with average grade 65% in final year results (Pre 2018). OR National Examination Board (NEB) (post 2018) Certificate with GPA 2.8.
New Zealand	Completion of National Certificate of Educational Achievement (NCEA) Level 3 with a minimum of 60 credits; (at least 40 at level 3 and 20 at level 2).	Completion of National Certificate of Educational Achievement (NCEA) Level 3 with a minimum of 80 credits; (at least 60 at level 3 and 20 at level 2).
Nigeria	Completion of Nigerian Senior School Certificate with maximum aggregate score of 22 in the best six subjects.	Successful completion of at least one-year post-secondary study at a recognised institution.
Norway	Completion of Norwegian Certificate of Completion of Upper Secondary School Exams Vitnemål fra den Videregående Skolen (Vitnemål) with grade average of 2.5 on a 6.0 scale.	Completion of Norwegian Certificate of Completion of Upper Secondary School Exams (Vitnemål fra den Videregående Skolen (Vitnemål)) with grade average of 3.0 on a 6.0 scale.
Pakistan	Completion of Higher Secondary School Certificate (HSC) or Intermediate Certificate examination in any stream with an average of 60%.	Completion of Higher Secondary School Certificate (HSC) or Intermediate Certificate examination in any stream with an average of 65%.
Papua New Guinea	Completion of Higher School Certificate with an overall average of 2.5.	Completion of Higher School Certificate with overall average of 3.0.
Philippines	K-12 (Academic Stream)/ High School Diploma/Certificate of Graduation with a Grade average of 75%.	Successful completion of at least one-year post-secondary study at a recognised institution.
Russia	Attestat o Srednem (polnom) Obshchem Obrazovanii (Certificate of Secondary (Complete) General Education) with a grade average of Pass.	Attestat o Srednem (polnom) Obshchem Obrazovanii (Certificate of Secondary (Complete) General Education) with a grade average of Credit.
Saudi Arabia	Completion of the General Secondary Education Certificate (Tawjihiyaya) with an overall average of 66%.	Completion of the General Secondary Education Certificate (Tawjihiyaya) with an overall average of 80%. OR Completion of foundation program. OR Successful completion of at least one-year post-secondary study at a recognised institution.

Country	Higher Education Diploma Programs	Undergraduate Programs
Singapore	Singapore-Cambridge GCE A Levels with minimum aggregate score 4 in at least 3 H2 subjects and 1 H1 subject. Aggregate to be calculated on the basis that A=5,B=4,C=3,D=2,E=1 for Higher 2 (H2) subjects. U (ungraded) and S (Sub pass) are fail grades with a notional value of 0. The notional value of a Higher 1 (H1) subject is half of that assigned to a Higher 2 (H2) subject, where A = 2.5, B = 2, C = 1.5, D = 1, E = 0.5. Higher 3 (H3) subjects are not included in the calculation of the aggregate.	Singapore-Cambridge GCE A Levels with minimum aggregate score 7 in at least 3 H2 subjects and 1 H1 subject. Aggregate to be calculated on the basis that A=5,B=4,C=3,D=2,E=1 for Higher 2 (H2) subjects. U (ungraded) and S (Sub pass) are fail grades with a notional value of 0. The notional value of a Higher 1 (H1) subject is half of that assigned to a Higher 2 (H2) subject, where A = 2.5, B = 2, C = 1.5, D = 1, E = 0.5. Higher 3 (H3) subjects are not included in the calculation of the aggregate.
South Africa	South African National Senior Certificate (2008 and onwards) with minimum average score of 51 of best 4 subjects (excluding Life Orientation).	South African National Senior Certificate (2008 and onwards) with minimum average score of 53 of best 6 subjects (excluding Life Orientation).
Sri Lanka	Sri Lankan A-levels or GCE A-levels with passing grades in two subjects.	Sri Lankan A-levels or GCE A-levels with passing grades in three subjects.
Taiwan	Completion of Senior High School Diploma or Senior Vocational School Diploma with an average of 65%.	Completion of the Senior High School Diploma or Senior Vocational School Diploma with an average of 70%.
Thailand	Matayom 6 (Certificate of Secondary Education) Minimum grade average of 2.0 on a 4 point scale.	Matayom 6 (Certificate of Secondary Education) with average grade of 2.5 on a 4 point scale.
Togo	Case-by-case basis.	Successful completion of at least one-year post-secondary study at a recognised institution.
UAE	Completion of Tawjihiyaya or Thanawiyya AL-A'ama (General Secondary Certificate) with a minimum score of 65%.	Completion of Tawjihiyaya or Thanawiyya AL-A'ama (General Secondary Certificate) with a minimum score of 75%
Uruguay	Case-by-case basis.	Successful completion of at least one-year post-secondary study at a recognised institution.
USA	Completion of High School Diploma.	Completion of High School Diploma with average grade of C.
Vietnam	Year 12 Hoc Ba - Vietnam year 12 school report and completion evidence with minimum grade average of 6.0 in Year 12 academic results.	Year 12 Hoc Ba – Vietnam year 12 school report and completion evidence and Bang Tot Nghiep Trung Hoc Pho Thong (Upper Secondary Education Graduation Diploma) with minimum grade average of 7.0 in Year 12 academic results. (If graduation diploma is unavailable, we will accept provisional certificate or confirmation of passing the Secondary School Leaving Examination, awaiting certificate).
Zimbabwe	Zimbabwe School Examination Council: Zimbabwe GCE at Advance Level (with minimum of 1 subject at Advanced Level (Grade E or above) AND minimum of 5 subjects passed (Grade E or above) in the Zimbabwe GCE at O level.	Zimbabwe School Examination Council: Zimbabwe GCE at Advance Level (with minimum of 2 subjects at Advanced Level (Grade E or above) AND minimum of 5 subjects passed (Grade E or above) in the Zimbabwe GCE at O level.

English language requirements

Applicants are required to meet the minimum English language requirements for entry to a Federation University Australia course. The English language requirement for general courses such as Art, Business and General Science is Academic IELTS 6.0 with no band less than 6.0, or equivalent.

Applicants need to provide one of the documents below to demonstrate their English language proficiency.



English tests

The English test results must be valid prior to commencement date at Federation University. Every student will be assessed individually, and a combination of English preparation programs will be considered. We also accept Occupational English Test (OET) results with "B" in all bands, for entry into Nursing and Health Science courses only. OET results are not accepted for courses in other fields, including English and Academic Preparation (EAP) programs.

ACADEMIC IELTS	TOEFL IBT	PEARSON PTE	CAMBRIDGE CAE
Overall 7.5 (no less than 8.0 in Listening & Speaking, no less than 7.0 in Reading & Writing)	106 with minimums: Reading 24, Listening 28, Speaking 26, Writing 27	Overall 73 (no less than 81 in Listening & Speaking, no less than 65 in Reading & Writing)	Overall 191 (no less than 200 in Listening & Speaking, no less than 185 in Reading & Writing)
Overall 7.5 (no band less than 7.0)	106 with minimums: Reading 24; Listening 24; Speaking 23; Writing 27.	73 (no band less than 65)	191 (no band less than 185)
Overall 7.0 (no band less than 6.5)	100 with minimums: Reading 19; Listening 20; Speaking 20; Writing 24.	65 (no band less than 58)	185 (no band less than 176)
Overall 6.5 (no band less than 6.0)	79–93 with minimums: Reading 13; Listening 12; Speaking 18; Writing 21.	58 (no band less than 50)	176 (no band less than 169)
Overall 6.0 (no band less than 6.0)	60–78 with minimums: Reading 13; Listening 12; Speaking 18; Writing 21.	50 (no band less than 50)	169 (no band less than 169)
Overall 5.5 (no band less than 5.0)	46–59 with minimums: Reading 8; Listening 7; Speaking 16; Writing 18.	42 (no band less than 36)	162 (no band less than 154)
Overall 5.0 (No band less than 5.0)	35–45 with minimums: Reading 4; Listening 4; Speaking 14; Writing 14.	36 (no band less than 36)	154 (no band less than 154)

English language exemptions

Federation University Australia can also accept the following academic qualifications as meeting our general English language requirements. All qualifications must have been taken no more than two years prior to enrolment at Federation. Temporary Graduate visa holders currently working in Australia who have completed their degree in Australia more than 2 years ago will also be accepted as meeting our general English Language requirements.

IN AUSTRALIA	
Qualification	Equivalent to Academic IELTS 6.0 with no band less than 6.0
English Program from a Federation recognised institution	Successful completion of English Language Intensive Course for Overseas Students
Australian Year 12 Secondary schooling	Successful completion of Senior Secondary Certificate
Australian TAFE or Higher Education provider	Successful completion of AQF Certificate IV or higher level
Foundation program from an Australian University	Successful completion of the Foundation program in Australia
OTHER COUNTRY	
First language is English – Citizens and passport holder of one of the following countries: Canada, Republic of Ireland, New Zealand, United Kingdom, United States of America	
Students who have completed at least five years' study in one or more of the following countries: Australia, Canada, New Zealand, South Africa, Republic of Ireland, United Kingdom, United States of America	

Further information about English language requirements is available at [federation.edu.au/international/study-at-federation/apply](https://www.federation.edu.au/international/study-at-federation/apply)



Important information

Simplified Student Visa Framework (SSVF)

Under the Simplified Student Visa Framework, the University is required to ensure all prospective international students meet the Genuine Temporary Entrant criteria and have the financial capacity to pay for tuition and living costs for the study period in Australia.

The University reserves the right to apply a pre-visa screening process for all international applications. International students must pass our pre-visa screening process before accepting their offer and making payment to obtain a Confirmation of Enrolment (CoE) letter. Students will need the CoE from the University to apply for a student visa.

As per the Department of Home Affairs' requirements for a student visa application, students must provide:

- A detailed statement setting out their reasons for undertaking the intended course(s) at Federation University Australia and explaining how they meet the genuine temporary entrant (GTE) criteria
- Evidence of sufficient funds to cover all expenses for the first 12 months of their stay in Australia
- Evidence of the genuine relationship between the applicant and any financial sponsor(s)
- A declaration that the applicant has access to sufficient funds and the applicant and the sponsor(s) have good financial capacity to meet course fees and living and travel costs to study in Australia.

Student visas

All overseas students are required to have an International Student Visa (or relevant visa with study rights) issued by the Australian Government.

Student visas are issued for full-time study on the understanding that the student completes their studies on campus, and has sufficient funds to cover tuition fees and living expenses while in Australia.

Students must comply with their visa conditions in order to retain their visa. You may be reported to the Department of Home Affairs and your visa may be cancelled if you do not comply with the conditions of your visa.

You can apply for your Student Visa from the Department of Home Affairs. For information regarding visas visit the Home Affairs website homeaffairs.gov.au

Overseas Student Health Cover

Students must have Overseas Student Health Cover (OSHC) before a student visa can be granted. The information for OSHC is included in your offer letter. The University can purchase health cover on your behalf through Bupa Australia Health.

If you wish to purchase your OSHC through another provider please advise the International Admissions team of your membership details. Your OSHC must cover your whole student visa period, and you must not arrive in Australia before the OSHC start date.

A full list of fees and information regarding coverage and exclusion is available at oshcaustralia.com.au

Your rights and responsibilities

The Educational Services for Overseas Students (ESOS) Act regulates the education and training sector's involvement with overseas students studying in Australia on student visas.

To view the ESOS Framework, please visit internationaleducation.gov.au

Cost of living

The cost of living will vary according to lifestyle and location. It is generally more affordable living in a regional area such as Ballarat or Gippsland due to lower accommodation costs compared to living in a major city. The Australian Government indicates the cost of living for 12 months is \$21,041.*

Estimated living expenses are included in the table opposite to help you prepare a budget.

Additional expenses such as tuition fees, Overseas Student Health Cover and other study expenses are not included in this table.

*studyinaustralia.gov.au (July 2022)

INDICATIVE LIVING EXPENSES PER WEEK	BALLARAT VICTORIA	GIPPSLAND VICTORIA	MELBOURNE VICTORIA	BRISBANE QUEENSLAND
Accommodation per week (based on median rent of shared 3 bedroom house/apartment)	\$120*	\$100*	\$260*	\$225^
Groceries*	\$140 – \$280	\$140 – \$280	\$140 – \$280	\$140 – \$280
Transport*	\$30 – \$60	\$30 – \$60	\$30 – \$60	\$30 – \$60
Gas and Electricity*	\$10 – \$20	\$10 – \$20	\$10 – \$20	\$10 – \$20
Phone and Internet*	\$15 – \$30	\$15 – \$30	\$15 – \$30	\$15 – \$30
Entertainment*	\$80 – \$150	\$80 – \$150	\$80 – \$150	\$80 – \$150
Total (per week)	\$395	\$375	\$535	\$500

*Department Human Services Rental Report, March 2022;

^Residential Tenancies Authority Rental Data For Brisbane City, March 2022;

*studyinaustralia.gov.au (July 2022)

International student fees

Course fees for tuition in this guide apply to international students studying on-campus in Australia. The fees listed are an annual amount, and they are based on a standard study load per year. Any variation to the study load will result in an adjustment to tuition fees. All fees are subject to annual review and may be adjusted.

Fees apply to students commencing in 2023 only. Course tuition fees cover the full cost of tuition but exclude the cost of living (housing and food), medical insurance, textbooks, entertainment, telephone calls, transport, as well as non-compulsory course expenses.

Non-tuition fees listed on the Administrative fees and charges website may be applied if relevant. These fees are subject to change. Refer to federation.edu.au for more information.

Partner providers

Federation University has collaborative relationships with a number of on-shore and offshore partner institutions. Further information available at federation.edu.au/international

Key dates for 2023

Applications

Generally, the deadline for offshore application is one month prior to semester commencement. Future students are advised to apply as early as possible in order to allow sufficient time for application and visa processing by Australian authorities. Please refer to the Federation University website for the most up-to-date information on application deadlines.

[federation.edu.au](https://www.federation.edu.au)

2023 Dates

Ballarat, Berwick, Gippsland and Brisbane Campuses

SEMESTER 1

Orientation 20 – 24 February

Lecture period 27 February – 26 May

Lecture break 7 – 16 April

SWOT Vac 29 May – 2 June

Exams 5 – 16 June

SEMESTER 2

Orientation 10 – 14 July

Lecture period 17 July – 13 October

Lecture break 28 August – 1 September

SWOT Vac 6 – 20 October

Exams 23 October – 1 November

SUMMER SEMESTER

Orientation and First lecture period 13 November – 22 December

Lecture break 23 December – 1 January 2024

Second lecture period 2 January 2024 – 2 February 2024

SWOT Vac 3 February 2024 – 6 February 2024

Exams 7 February 2024 – 16 February 2024



Federation University Australia

Enquiries ask.federation.edu.au

Call + 61 3 5327 9018

Address **PO Box 663, Ballarat VIC 3353, Australia**

Coursefinder study.federation.edu.au

#feduni      /feduniaustralia

Disclaimer: Information contained in this brochure was correct at the time of production.
For up to date information on courses please refer to study.federation.edu.au.
Printed August 2022.

Federation University Australia reserves the right to alter any course, procedure
or fee, as deemed necessary. Federation University Australia courses are
delivered with Victorian and Commonwealth Government funding.
CRICOS Provider No. 00103D. National RTO Code: 4909.

Feed